



# COSTAFIORE GARDENS

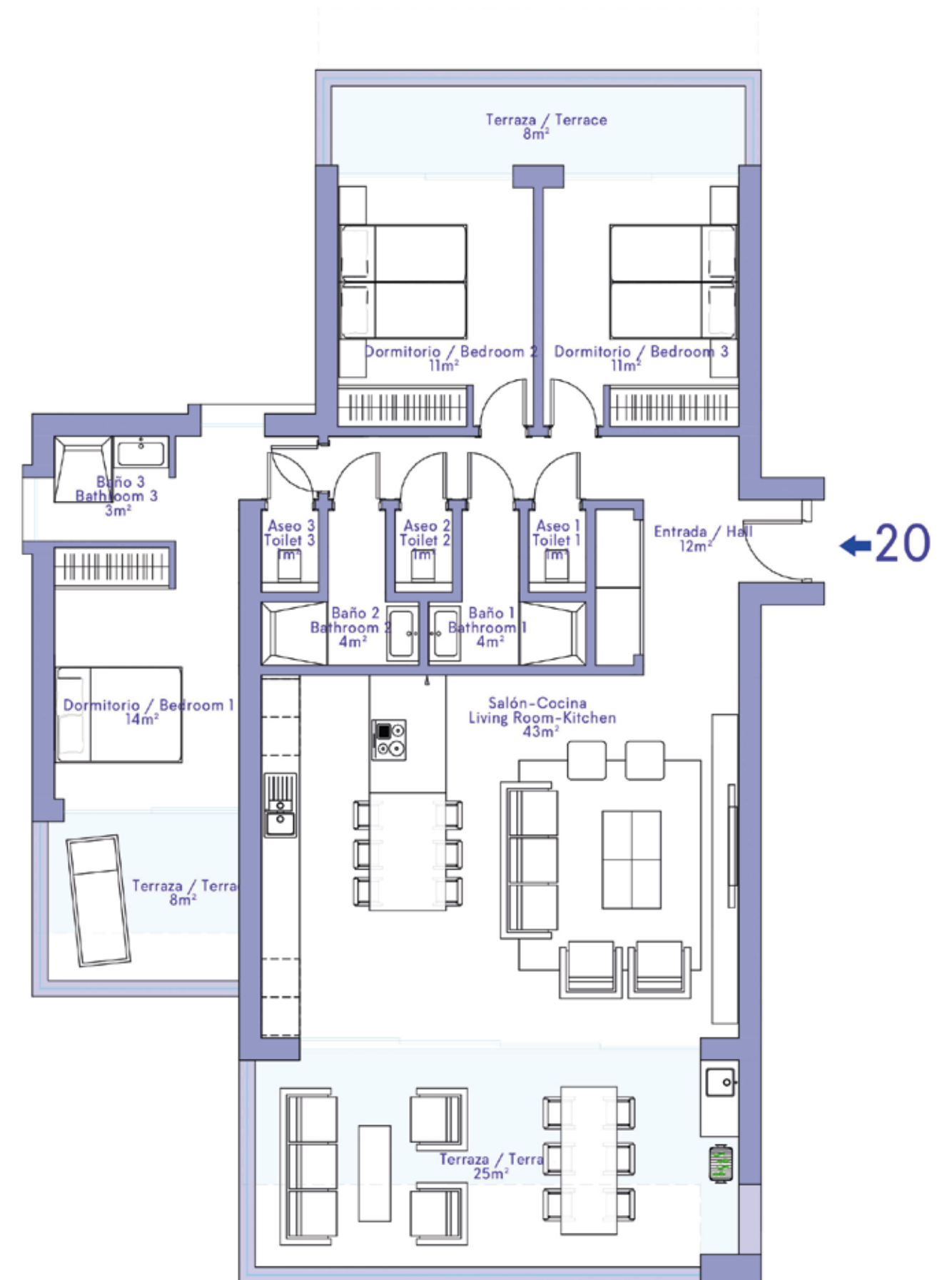
WHERE QUALITY MEETS COMFORT

## APARTMENT 20



# SURFACE AREAS

USEFUL AREA	119,10 m2
BUILT	186,86 m2
terraces	41m2







## Features

- 3 bedrooms
- 3 bathrooms
- 3 toilet
- kitchen
- livingroom
- terraces 41m<sup>2</sup>
- 2 parking places
- 1 storage





## THE KITCHEN

The kitchen cabinets have a glossy white finish, and the doors and drawers are equipped with a soft-close system designed by INKO. INKO, as a leading kitchen manufacturer in Spain, produces high-quality kitchen systems with great durability and a long service life.

For the countertop, we used the laminate material Focus Sale. The polished, luminous finish enhances the depth of color and delicately reflects light, creating a feeling of freshness, spaciousness, and balance.

All appliances are integrated and consist of a multifunction oven, microwave, dishwasher, and a fridge-freezer combination. The induction hob has an integrated extractor, so there is no need to install a large extractor fan in the ceiling that takes up space in the kitchen, all from Siemens. The Sommelier built-in wine cooler combines advanced technology and elegant design to offer perfect wine preservation in a functional and aesthetically harmonious space.



## LIVING ROOM

---

At Costafiore Gardens, we chose Technal for its ability to create an exclusive four-sliding-door system with a 75% opening on both sides, achieving a seamless connection between indoors and outdoors. The Soleal frames, with their minimalist design and elegant lines, feature concealed hardware, lending perfection, cleanliness, and elegance to the whole.



## BEDROOMS

---

There is plenty of storage space in the penthouses due to the built-in cupboards. The natural light in the penthouses is guaranteed by the amount and height of the windows and sliding doors.







## SANITARY EQUIPMENT

---

Porcelanosa Grupo chosen as the supplier of ceramic tiles and sanitary ware in Costafore Gardens. Porcelanosa Grupo is a leading Spanish business group specialising in the production and sale of ceramic and natural floor and wall tiles, wall cladding, sanitary ware, taps, bathroom accessories and installation, environmental and sustainability solutions.

All bathrooms have a hanging bathroom cabinet with a glossy white finish. The bathroom furniture is equipped with a manual self-closing drawer. A sleek, simple but sophisticated design. The tap is round and has a chrome finish. The countertop is of solid plastic of the brand Urban by Porcelanosa and has an integrated sink.



## TERRACES

---

Penthouses offer sea views on the south side and views of the beautiful mountains on the north side. The penthouses have three terraces and a rooftop solarium with an exclusive private pool. The terraces vary in total usable area from 84m<sup>2</sup> to 96 m<sup>2</sup> and a solarium of 18 m<sup>2</sup>

