

An aerial photograph of a residential development featuring eight modern villas, each with a private swimming pool and landscaped garden. The villas are arranged in a semi-circular pattern along a road. Each villa is numbered from 1 to 8 in a white circle. The surrounding area includes a road with parked cars, a landscaped area with palm trees, and a circular landscaped area at the bottom right. The background is a dark, solid color.

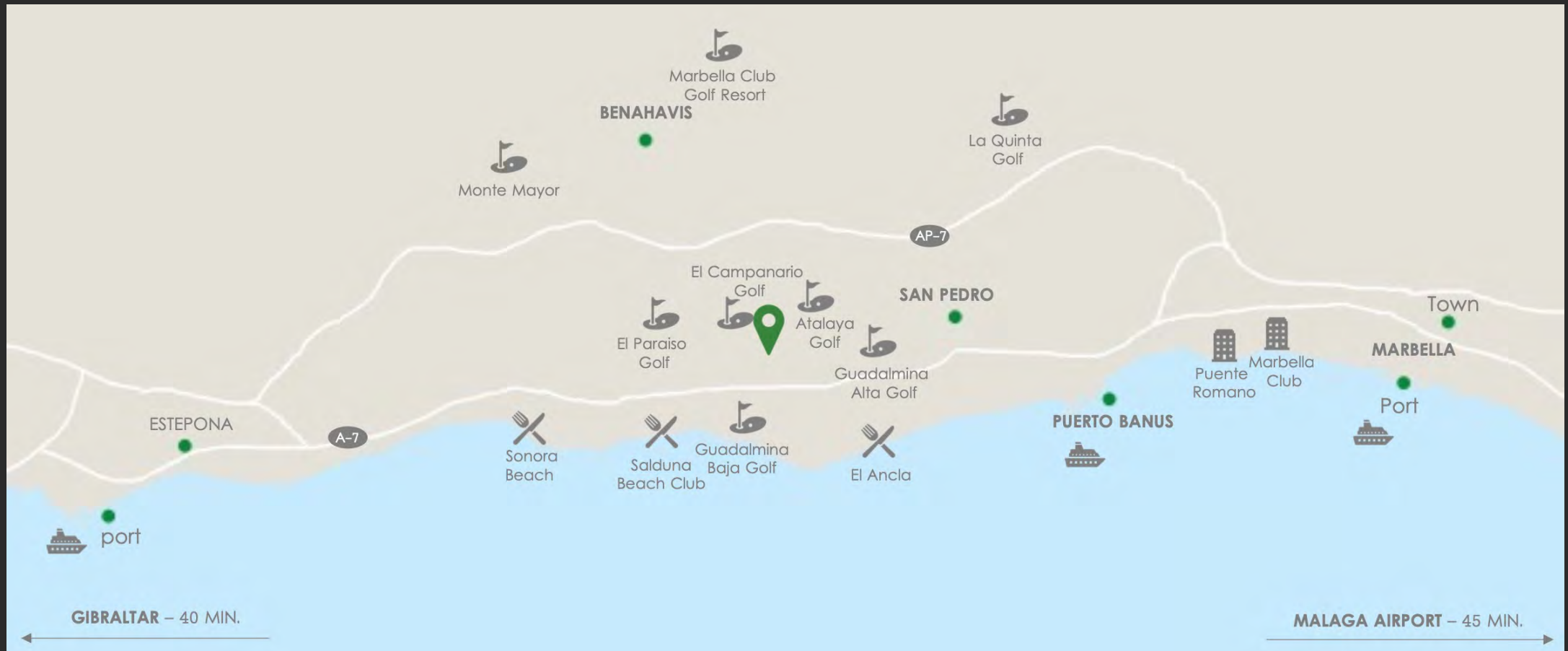
Villas Campanario Golf

A collection of 8 exclusive designed residential villas, set in the heart of Golf Triangle (Campanario-Paraiso-Atalaya Golf courses)



Location

The New Golden Mile is the name given to the stretch of coastline between San Pedro Alcántara in Marbella and Estepona. Approximately 45 minutes from both Gibraltar and Málaga airports, and within a short drive from Puerto Banús, Marbella, Estepona and San Pedro, the New Golden Mile continues to grow in popularity. It's home to some of the most established complexes, located within walking distance of shops, restaurants, schools and the beach.




Details

Made up of four-bedroom contemporary villas extending out to the fairways of the Campanario Golf Course. It is the perfect infusion of nature and architecture, with stunning exteriors and exceptional interior finishes. There are several different layout types to choose from, each creating a different living experience.

Key features of each home include open plan living, fully fitted kitchens, large en-suite bedrooms and plenty of built-in storage. The larger villas give you the option of spare rooms that can be set up as home offices or as additional bedrooms if needed. They also have private pools and spacious gardens overlooking views of the golf course.



Characteristics



Villa	Plot size	Built size	Terraces	Covered terrace	Parking	Total built	N° beds	N° bath	Pool
2	459.61m ²	295.40m ²	100.79m ²	21.33m ²	44.18m ²	424.00m ²	4	4	20.00m ²
4	680.93m ²	347.64m ²	121.35m ²	47.40m ²	94.30m ²	529.56m ²	4	4	18.73m ²
5	567.32m ²	372.15m ²	106.20m ²	44.97m ²	43.16m ²	525.97m ²	4	3.5	18.75m ²
8	419.37m ²	254.40m ²	79.65m ²	24.06m ²	39.62m ²	362.70m ²	4	3.5	13.62m ²

Available villas are:

Villa 4

Villa 5

Villa 8

Villa 5

Villa FEM will feature a modern design combining the best materials with a contemporary but at the same time cozy and timeless architecture, offering 4 bedrooms , 3 bathrooms and toilet.

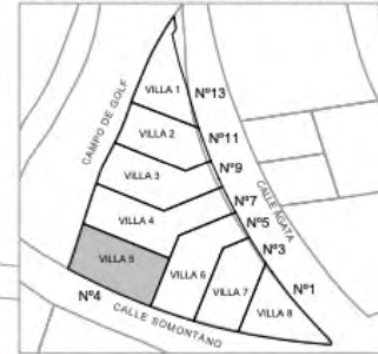
There are a nice entrance hall leading to the impressive living and dining room with open plan kitchen with laundry and access to the porche with beautiful swimming pool, guest bedroom or office and guest bathroom on the ground floor. The first floor consists of the master bedroom with dressing room and bathroom on suit and access to a large terrace plus two secondary bedrooms and additional bathroom.

The villa also includes a 174,96m2 basement with garaje for 2 cars, multiuse room with natural light, toilet, storage and tech room.





VILLA 5.CALLE SOMONTANO Nº4



Floor plans

Villa 5

GROUND FLOOR

Useful size

Living-kitchen (8)	61,35m ²
Office (9)	8,00m ²
Bathroom (10)	3,47m ²
Laundry (11)	6,52m ²
Stairs (12)	6,29m ²

Total useful	85,67m²
Total built	103,50m²

EXTERIOR

Covered terrace 1 (13)	1,50m ²
Covered terrace 2 (14)	33,12m ²
Terrace (15)	68,65m ²
Pool (16)	18,75m ²

TOTAL

Plot	567,32m²
Built size	372,15m²
Total built	527,97m²



Floor plans

Villa 5

FIRST FLOOR

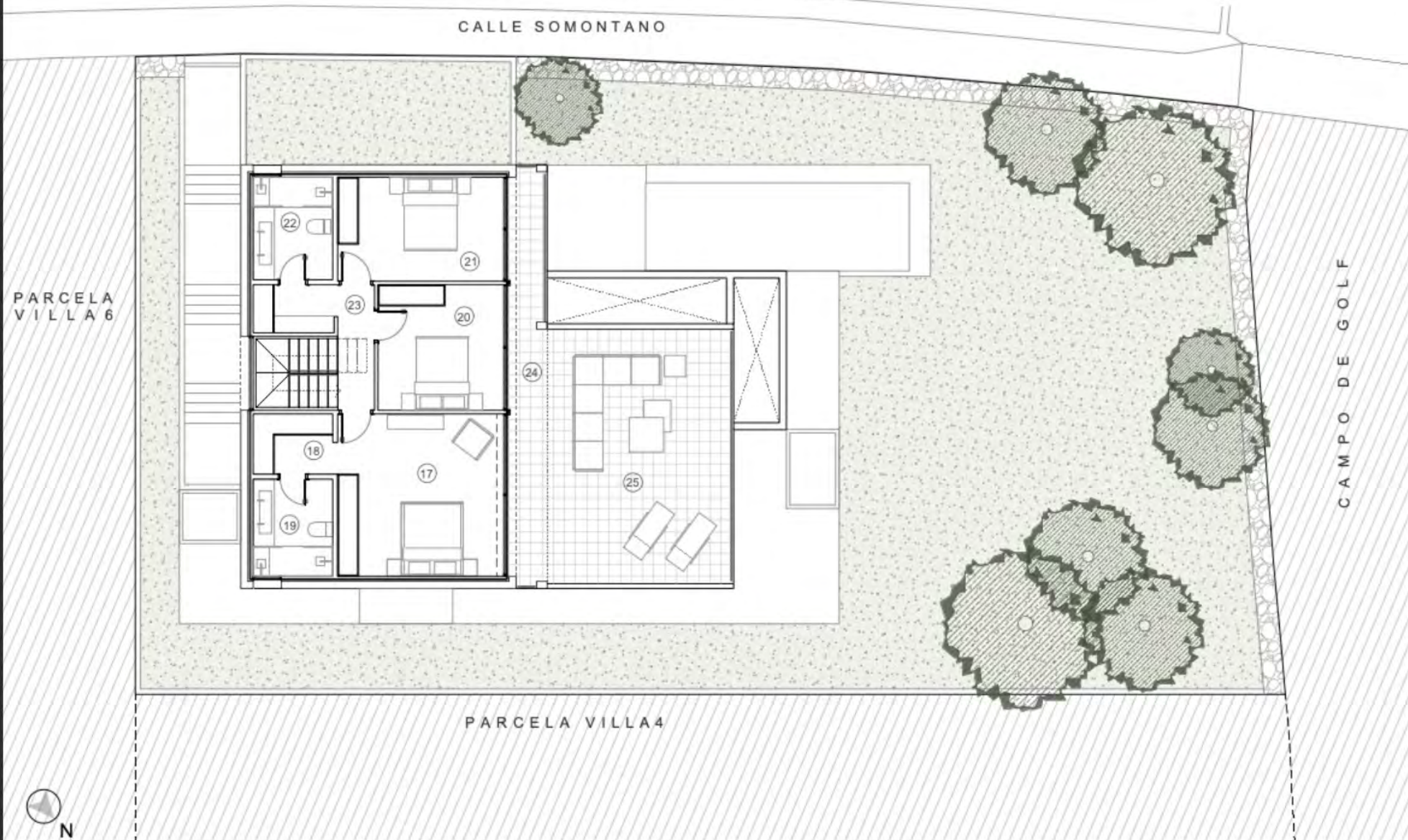
Useful size

Master bedroom (17)	21,72m ²
Dressing room (18)	3,86m ²
Master bathroom (19)	6,21m ²
Bedroom 1 (20)	13,93m ²
Bedroom 2 (21)	12,71m ²
Bathroom 2 (22)	6,57m ²
Hall (23)	6,95m ²
Covered terrace (24)	10,35m ²
Terrace	37,55m ²

Total useful	120,03m²
Total built	144,24m²

TOTAL

Plot	567,32m²
Built size	372,15m²
Total built	527,97m²



Floor plans

Villa 5

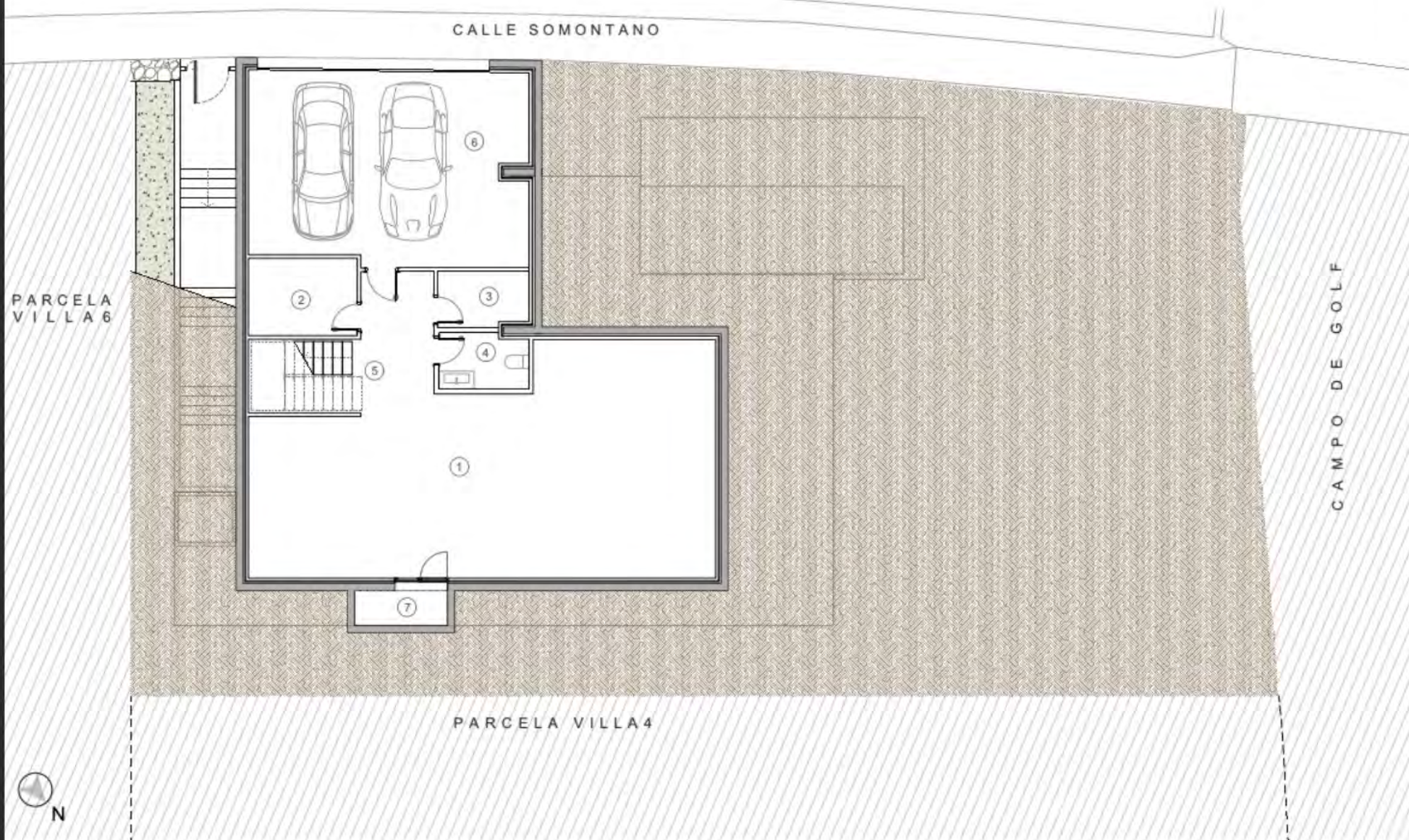
BASEMENT

	Useful size
Multiuse room (1)	83,00m ²
Storage (2)	6,82m ²
Installation room (3)	4,03m ²
Toilet (4)	3,94m ²
Stairs (5)	6,01m ²
Garage (6)	43,16m ²
Patio (7)	2,65m ²

Total useful	149,61m²
Total built	174,96m²

TOTAL

Plot	567,32m²
Built size	372,15m²
Total built	527,97m²



PLANTA SÓTANO AMPLIADO

