

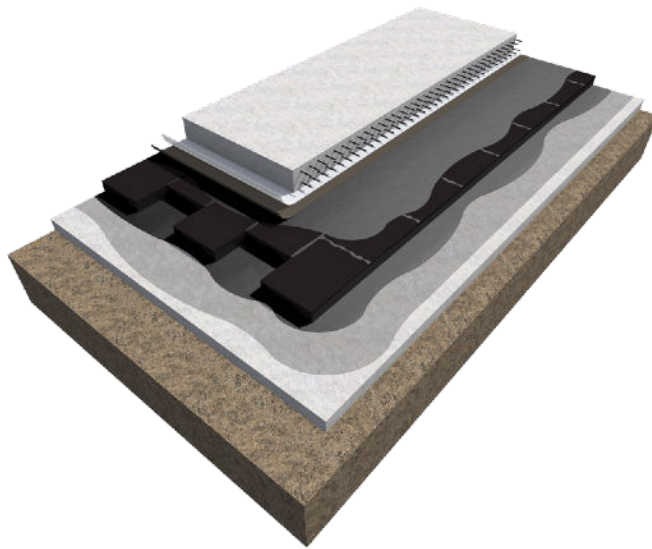
SAN ANTONIO HOUSES

LUXURY DEVELOPMENT

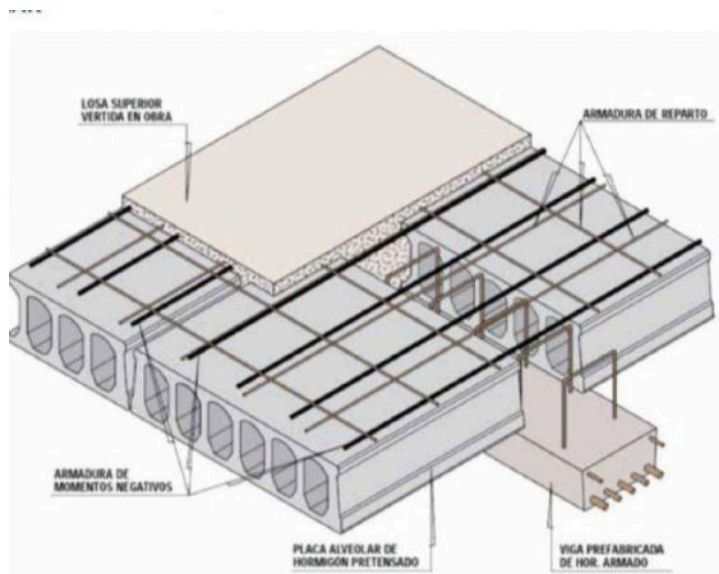
**QUALITY REPORT**

# FOUNDATION - STRUCTURE

- Foundation made of a concrete plate resting on the ground which distributes the weight and loads of the building on the entire support surface.

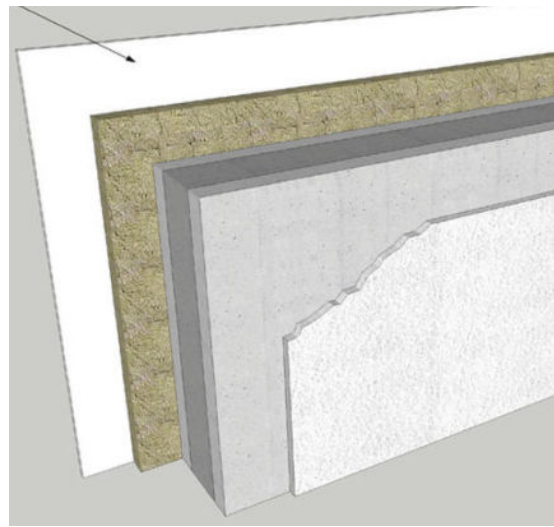


- Structure made of concrete with large lights, according to the technical Spanish regulations for seismic resistance, wind and fire.

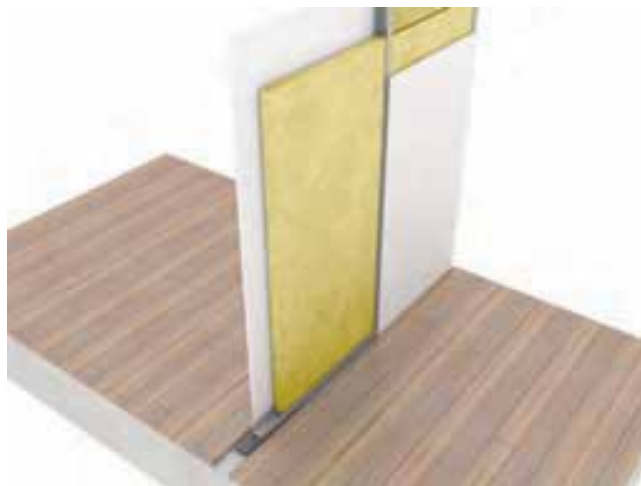


## FRONTAGE WALLS - INSIDE WALLS - ROOF

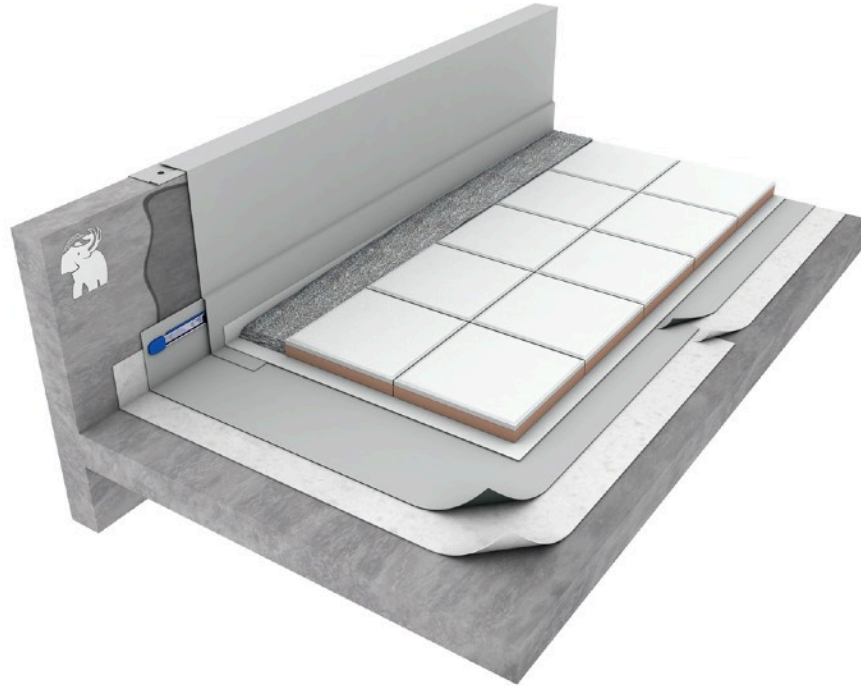
- Frontage Walls made of solid perforated brick (two sheets) air chamber with polyurethane insulation, siding with mortar resin layer and wooden parts and zones treated for outdoor use in the protected facade and concrete walls with integrated insulations.



- Inside Walls the partitions walls of the housing units will be of internal metal structure, internal acoustic insulation and plasterboards (Pladur type)

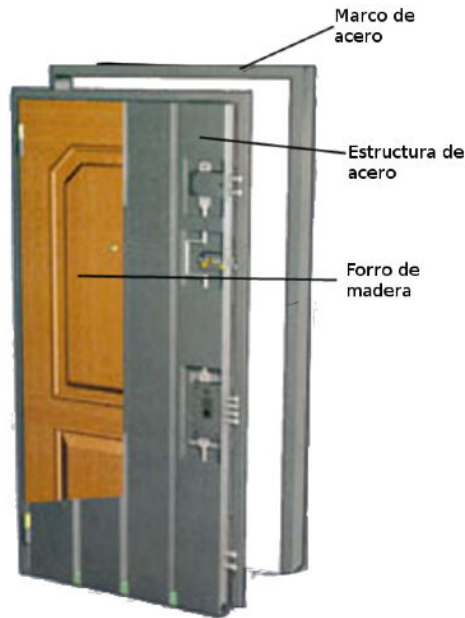


- Roof Top inverted, formed by double bituminous waterproofing with polystyrene insulation, geotextile sheet, draining gravel and outdoor porcelain ceramic tile paving.



# WOODWORK

- Security entrance door, armored in stainless steel , glass and wood exterior finish ( dark wood colour ) or similar.



- Windows in lacquered wood with thermal break profiles( wood dark outside and black inside ) , sliding and folding system with double glazing type "climalit" safety glass and soundproofing or similar.



- Passing interior wood doors, opening swinging doors/ sliding in doors of wood with upper part in the same quality wood, colour white matt or similar.



- Terrace structure closures made in black aluminium metallic aluminium with double glass window and anti-solar treatment or similar.



# FLOORING

- INTERIOR FLOORING Porcelain Ceramic Flooring



## CLIMATE SYSTEMS

- Air Conditioning System by central ducted control in all the property, with 6000 freezeries inverter controlled by wall controller. MITSUBISHI ELECTRIC or similar.



- Hot water heater with 200L capacity heated by either by solar panel or aerotermic equipment. TERMICOL or similar.





# PLUMBING

- Supply pipe network in high density polypropylene materials.



- Bathrooms fully quipped wares sanitary wares with hanging anchor system, hidden tank, bathroom cabinets furniture and sink(color to be chosen), shower systems and taps, towel heater, glass mirror, shower plates made by anti flip tiles with water isolation and glass screen doors to showers or similar.







## LIGHT MECHANISMS

- The electrical mechanisms, also known as light keys, light sockets or light switches, are the elements that enable and allow most of the installations of our homes to function correctly, facilitating their use and enjoyment or similar.



# NIESSEN



**Blanco**



## PAINTING FINISHED INT.

- Painting with a smooth finish on the horizontal and vertical surfaces. Choice of color available.



## WARDROBES - OPEN CLOSETS

Built-in from floor to ceiling top, covered in wood with drawers and hanging interior elements, wood style for open closets and sliding doors for wardrobes ( color change available to black ) or similar.



# KITCHEN

- Furnished with high quality doors ( colours to be chosen by clients , white , black , grey ), with Bosch/Balay appliances or a similar type integrated or seen ( client optional ), Silestone worktop, and central island according to design or similar.



**BOSCH**

