

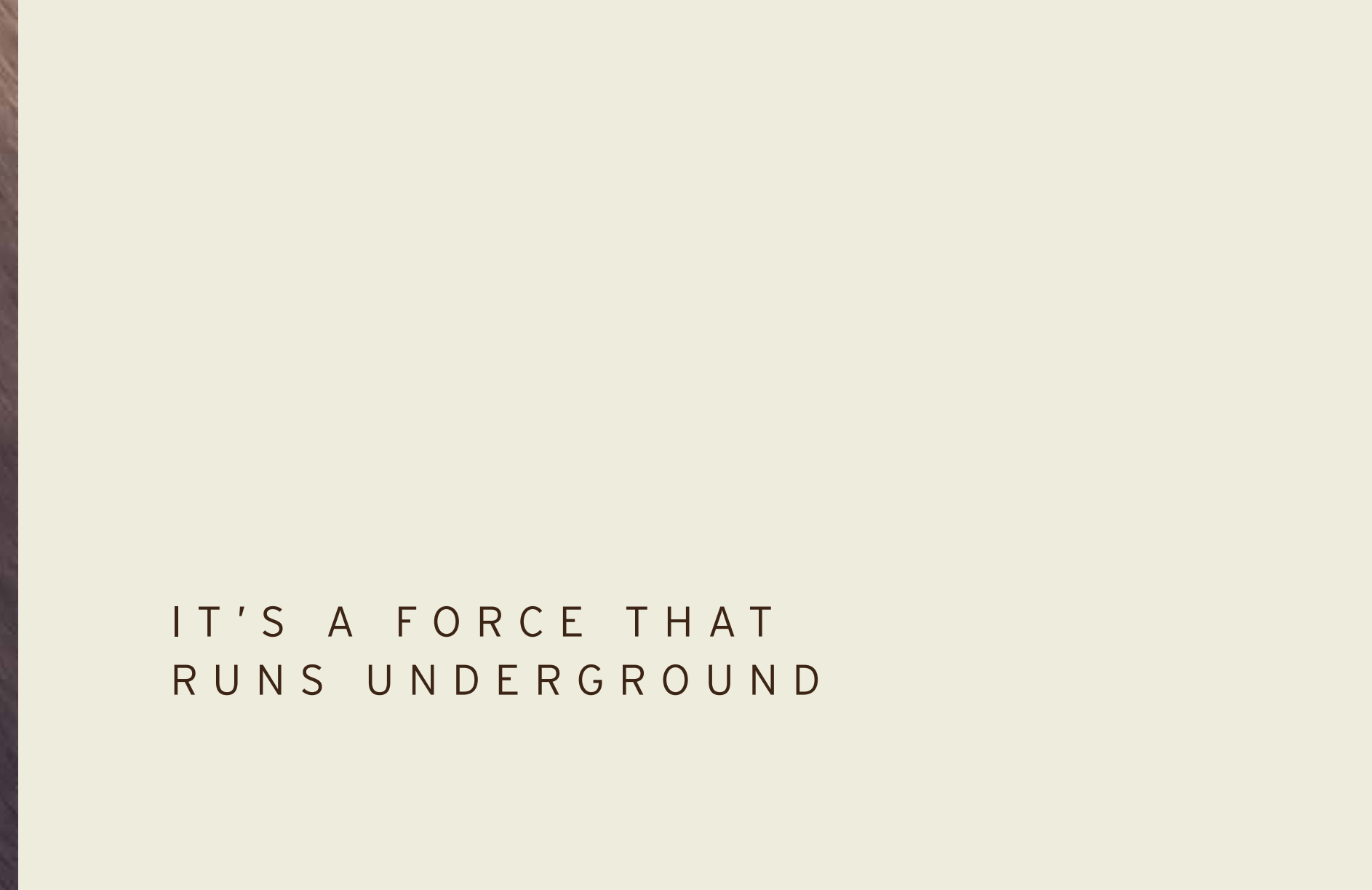
# T/ERRA V/VA



DESIGN INSPIRED BY  
AUTOMOBILI LAMBORGHINI



YOU CAN FEEL IT  
UNDER YOUR FEET



IT'S A FORCE THAT  
RUNS UNDERGROUND

Disclaimer: All pictures, plans, layouts, information, data and details included in this brochure are indicative only and may change at any time up to the final 'as built' status in accordance with final designs of the project, regulatory approvals and planning permissions. All accessories and interior finishes such as wallpaper, chandeliers, furniture, electronics, white goods, curtains, hard and soft landscaping, pavements, features, gym, and other elements displayed in the brochure, or between the plot boundary, are not part of the unit and are shown for illustrative purposes only.





## T/ERRA V/VA

### MAGNETIC ATTRACTION

A powerful territory and an icon of energy. When they come together, the supernatural happens. The land shakes, the land becomes alive. Tierra Viva Benahavís – Costa Del Sol, is an exclusive residential community of luxury villas, with design inspired by Automobili Lamborghini.

An architectural prodigy brought to life by DarGlobal, debuting for the first time in Spain.



## THE MYTH

Founded in 1963, Automobili Lamborghini is the epitome of luxury super sports cars made of innovative technology and futuristic lines. An Italian excellence that is still based in Sant'Agata Bolognese where it all started.

The true essence of Lamborghini DNA is represented in this futuristic and elegant architectural project complemented with interiors inspired by the super sports car design, thanks to incomparable craftsmanship and passion.





## COSTA DEL SOL

Exclusive yet relaxed.  
Fashionable yet characteristic.  
Connected yet nested.  
Costa Del Sol has it all.

Costa del Sol offers a gentle mild climate all year long, with proximity to all the main destinations in Spain and Europe thanks to high-speed trains and an international airport nearby.



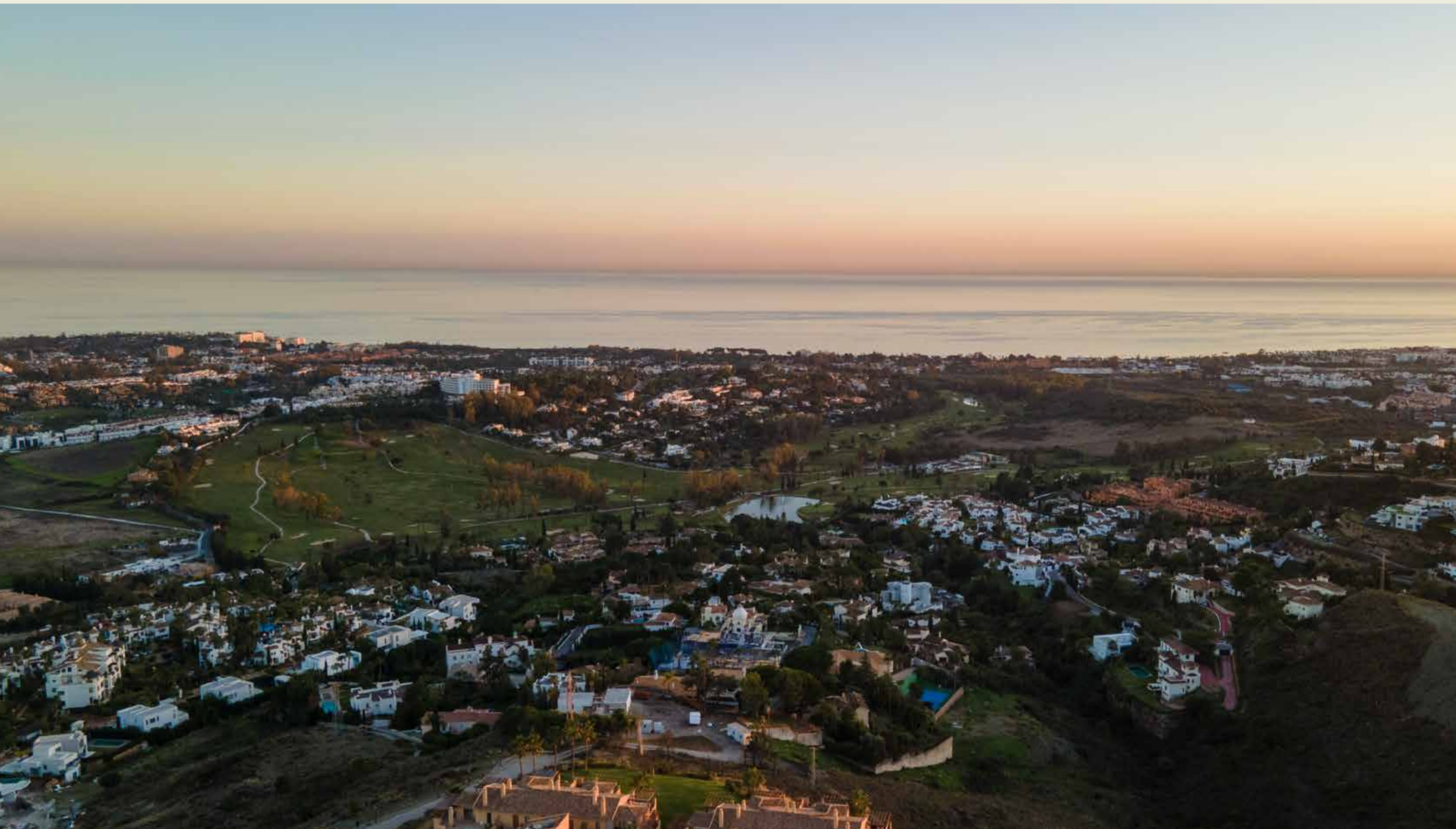
Vibrant and attractive, Costa Del Sol hosts tons of stylish clubs, restaurants and hotels, as well as shopping areas, exclusive marinas and breathtaking beaches.





## BENAHAVÍS

Benahavís ranks as one of the wealthiest municipalities in Spain thanks to the luxurious golf clubs and resorts that surround the area. In recent years, it has emerged as one of the most desirable locations on Costa del Sol to buy property, in a natural haven of peace and beauty within easy reach of Marbella.



## GENIUS LOCI

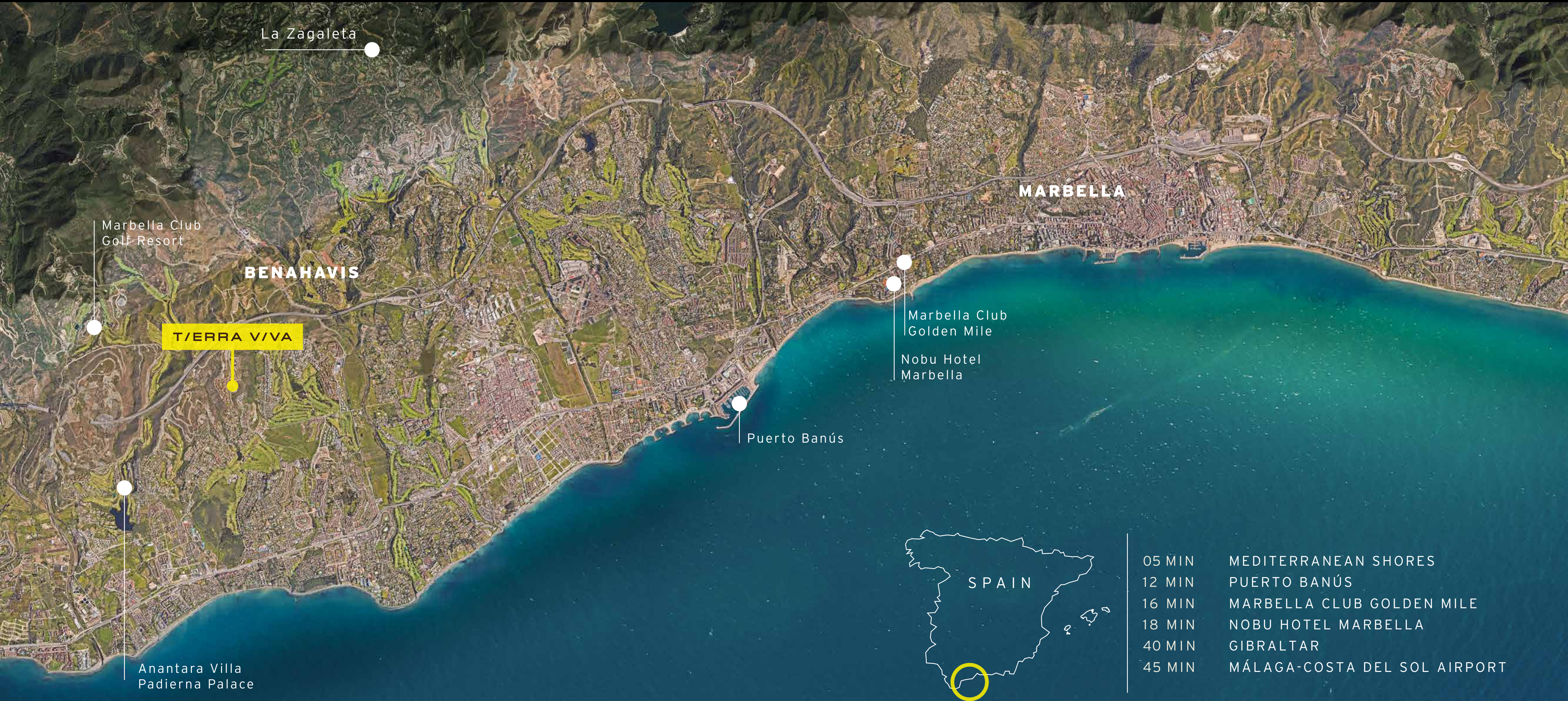
The Ancient Romans believed some places had divine qualities, Tierra Viva is one of them. Nestled on divine hills outside Los Jaralillos, in the exclusive area of Benahavís, the property is located just 8 minutes away from Marbella and 5 minutes from the shores.

With 12 golf clubs, charming Andalusian villages and the stylish Puerto Banús in the surroundings, Tierra Viva offers a peaceful retreat in the middle of a vibrant community.





# COSTA DEL SOL



La Zagaleta

Marbella Club  
Golf Resort

**BENAHAVIS**

**TIERRA VIVA**

**MARBELLA**

Marbella Club  
Golden Mile

Nobu Hotel  
Marbella

Puerto Banús

Anantara Villa  
Padierna Palace



SPAIN

- 05 MIN MEDITERRANEAN SHORES
- 12 MIN PUERTO BANÚS
- 16 MIN MARBELLA CLUB GOLDEN MILE
- 18 MIN NOBU HOTEL MARBELLA
- 40 MIN GIBRALTAR
- 45 MIN MÁLAGA-COSTA DEL SOL AIRPORT

## T/ERRA V/VA

### PROMINENT POSITION

Tierra Viva is a luxury residential complex of 53 unique villas sitting gently on the side of a hill, with every villa standing on a different height.





## MEDITERRANEAN IN THE EYES

The prestigious position of Tierra Viva overlooking the coastline, allows every villa to enjoy endless panoramas of the Mediterranean Sea.

A soothing vision for the soul.



A PLETHORA OF  
HIGH-END AMENITIES  
FEW MINUTES AWAY

Descending from Tierra Viva is Puerto Banús, where a luxurious offering of designer boutiques, sport cars parading, exclusive nightclubs, and fine dining experiences populate the picturesque waterfront.

**T/ERRA V/IVA**



*Aerial View of Puerto Banús, Marbella, Malaga, Spain*

T/ERRA V/VA



*Views of Marbella and the Costa Del Sol, as seen from the vantage point of Tierra Viva.*

T/ERRA V/VA





# T/ERRA V/VA

## HIDDEN TREASURES

Sharp lines and finest materials are the unique traits of the luxury villas in Tierra Viva. As supernatural gems coming out of the land itself, they are named after the most precious stones.



DIAMANTE VILLAS  
(6-BEDROOMS)



ZAFIRO VILLAS  
(5-BEDROOMS)



ESMERALDA VILLAS  
(4-BEDROOMS)





DIAMANTE VILLAS

T/ERRA V/VA

# DIAMANTE VILLAS

Majestic and superb, the Diamante Villas are spread on four levels, host 6 bedrooms and know no compromises.

Spacious roof terraces with breath-taking Mediterranean Views are the perfect set for family and social gatherings, while the extensive swimming pool and luxuriant gardens make this villas the perfect setting for an unforgettable holiday that can last for a lifetime.



T/ERRA V/VA

/ DIAMANTE VILLAS



T/ERRA V/VA

/ DIAMANTE VILLAS



T/ERRA V/VA

/ DIAMANTE VILLAS



T/ERRA V/VA

/ DIAMANTE VILLAS





ZAFIRO VILLAS

T/ERRA V/VA

T/ERRA V/VA

## ZAFIRO VILLAS

Refined, classy and sophisticated, the 4-level Zafiro Villas sit gently on the hillside, offering stunning views from every room, especially from the panoramic rooftop. With 5 bedrooms and plenty of common spaces, they feature a wine cellar, a multipurpose room that can easily become a gym and a massive pool area for unforgettable memories.





T/ERRA V/VA

/ ZAFIRO VILLAS



**T/ERRA V/VA**

/ ZAFIRO VILLAS

Iconic, grand, full of light. Inside the Zafiro Villas everything is sophisticated. Tailor-made finishings and high-end materials enhance the generous open-spaces, for a sublime living experience.



T/ERRA V/VA

/ ZAFIRO VILLAS



T/ERRA V/VA

/ ZAFIRO VILLAS





ESMERALDA VILLAS

T/ERRA V/VA

# ESMERALDA VILLAS

Every day is a summer day in the Esmeralda Villas, the 4-bedroom residences with glorious terraced gardens and exclusive pool areas.

Here, everything was created to offer the most relaxing and unwinding experience, like the steam & sauna rooms and the home theatre in the basement floor.



T/ERRA V/VA

/ ESMERALDA VILLAS



T/ERRA V/VA

/ ESMERALDA VILLAS





T/ERRA V/VA

/ ESMERALDA VILLAS



T/ERRA V/VA

/ ESMERALDA VILLAS



T/ERRA V/VA

/ ESMERALDA VILLAS



T/ERRA V/VA

/ ESMERALDA VILLAS



T/ERRA V/VA



## FEATURES, SPECIFICATIONS & FLOOR PLANS

### DISCLAIMER

All pictures, plans, layouts, information, data and details included in this brochure are indicative only and may change at any time up to the final 'as built' status in accordance with final designs of the project, regulatory approvals and planning permissions. All accessories and interior finishes such as wallpaper, chandeliers, furniture, electronics, white goods, curtains, hard and soft landscaping, pavements, features, gym, and other elements displayed in the brochure, or between the plot boundary, are not part of the unit and are shown for illustrative purposes only.

T/ERRA V/VA



## AN EXCLUSIVE COMMUNITY WITH 24/7 PREMIUM SECURITY

/ Located within the gated community of Los Jaralillos - Benahavís, Tierra Viva prides itself on providing a private and secure environment for its residents with premium 24/7 security services.

T/ERRA V/VA



## PERSONAL PARADISE

/ Each villa within Tierra Viva comes with its own private pool, offering a chance to create a personal oasis for serene moments and unforgettable memories.





# TIERRA VIVA MASTERPLAN

-  DIAMANTE VILLAS  
6-bedrooms
-  ZAFIRO VILLAS  
5-bedrooms
-  ESMERALDA VILLAS  
4-bedrooms





# T/ERRA V/VA

## SPECIFICATIONS

All villas come with concrete boundary walls, double glazed windows, cooling and heating system, leveled and graded outdoor spaces, precast concrete pavers on driveway and parking.

Each villa features an exquisite pool and beautifully crafted hardscape.

Note: The villas do not come with any furniture nor softscaping.

### FOYER

FLOOR	Local Marble or equivalent
SKIRTING	Local Marble or equivalent
WALLS	Plastered walls with emulsion paint
CEILING	Gypsum ceiling with emulsion paint
ELEVATOR	Passenger elevator

### LIVING ROOM / DINING

FLOOR	Local Marble or equivalent
SKIRTING	Local Marble or equivalent
WALLS	Plastered walls with emulsion paint
CEILING	Gypsum ceiling with emulsion paint

### BEDROOMS

FLOOR	Porcelain Marble Look or equivalent
SKIRTING	Porcelain Marble Look or equivalent
WALLS	Plastered walls with emulsion paint
CEILING	Gypsum ceiling with emulsion paint
WARDROBE	Joinery with lacquered or laminate finish

### KITCHEN

FLOOR	Porcelain Marble Look or equivalent
SKIRTING	Porcelain Marble Look or equivalent
WALLS	Wall panels
CEILING	Gypsum ceiling with emulsion paint
COUNTERTOP	Engineered Stone or equivalent
CABINETS	Joinery with lacquered or laminate finish
APPLIANCES	Built-in appliances (Fridge, Oven, Hob, Hood, and Dishwasher). Brand: Miele or equivalent

### BATHROOMS

FLOOR	Porcelain Marble Look or equivalent
WALLS	Porcelain Marble Look or equivalent
CEILING	Moisture resistant gypsum ceiling finished with paint
COUNTERTOP	High quality solid surface or equivalent
JOINERY	Joinery with lacquered / laminate finish
SANITARY FIXTURES	Duravit or equivalent
SANITARYWARE	Duravit, Kohler or equivalent
MIRROR	Included

# T/ERRA V/VA

## SPECIFICATIONS

### SERVICE KITCHEN

FLOOR	Porcelain tile or equivalent
SKIRTING	Porcelain tile or equivalent
WALLS	Wall panels
CEILING	Gypsum ceiling with emulsion paint
COUNTERTOP	Engineered Stone or equivalent
CABINETS	Joinery with lacquered / laminate finish

### BASEMENT HALLWAY

FLOOR	Porcelain Marble Look or equivalent
SKIRTING	Porcelain Marble Look or equivalent
WALLS	Plastered walls with emulsion paint
CEILING	Gypsum ceiling with emulsion paint

### SPA ROOM

Mechanical, electrical and plumbing provisions will be provided.

COUNTERTOP	High Quality Solid Surface or equivalent
JOINERY	Joinery with lacquered / laminate finish
SANITARY FIXTURES	Duravit or equivalent
SANITARYWARE	Duravit, Kohler or equivalent
MIRROR	Included

*\* Lockers, bench and furniture not included*

### SAUNA & STEAM

Mechanical, electrical and plumbing provisions will be provided.

### HOME THEATRE

FLOOR	Porcelain tile or equivalent
SKIRTING	Porcelain tile or equivalent
WALLS	Plastered walls with emulsion paint
CEILING	Gypsum ceiling with emulsion paint

*\* Carpet, furniture and electronics not included*

### MULTIPURPOSE ROOM/GYM

FLOOR	Porcelain Marble Look or equivalent
SKIRTING	Porcelain tile or equivalent
WALLS	Plastered walls with emulsion paint
CEILING	Gypsum ceiling with emulsion paint

*\* Gym equipment not included*

### MAIDS, STORAGE & LAUNDRY

FLOOR	Porcelain tile or equivalent
SKIRTING	Porcelain tile or equivalent
WALLS	Plastered walls with emulsion paint
CEILING	Gypsum ceiling with emulsion paint

### MAIDS BATHROOMS

FLOOR	Porcelain tile or equivalent
WALLS	Porcelain tile or equivalent
CEILING	Moisture resistant gypsum ceiling finished with paint
COUNTERTOP	Solid Surface or equivalent
SANITARY FIXTURES	Duravit or equivalent
SANITARYWARE	Duravit, Kohler or equivalent
MIRROR	Included

T/ERRA V/VA



# DIAMANTE VILLAS

6 - B E D

SQM 1,254 - 1,450

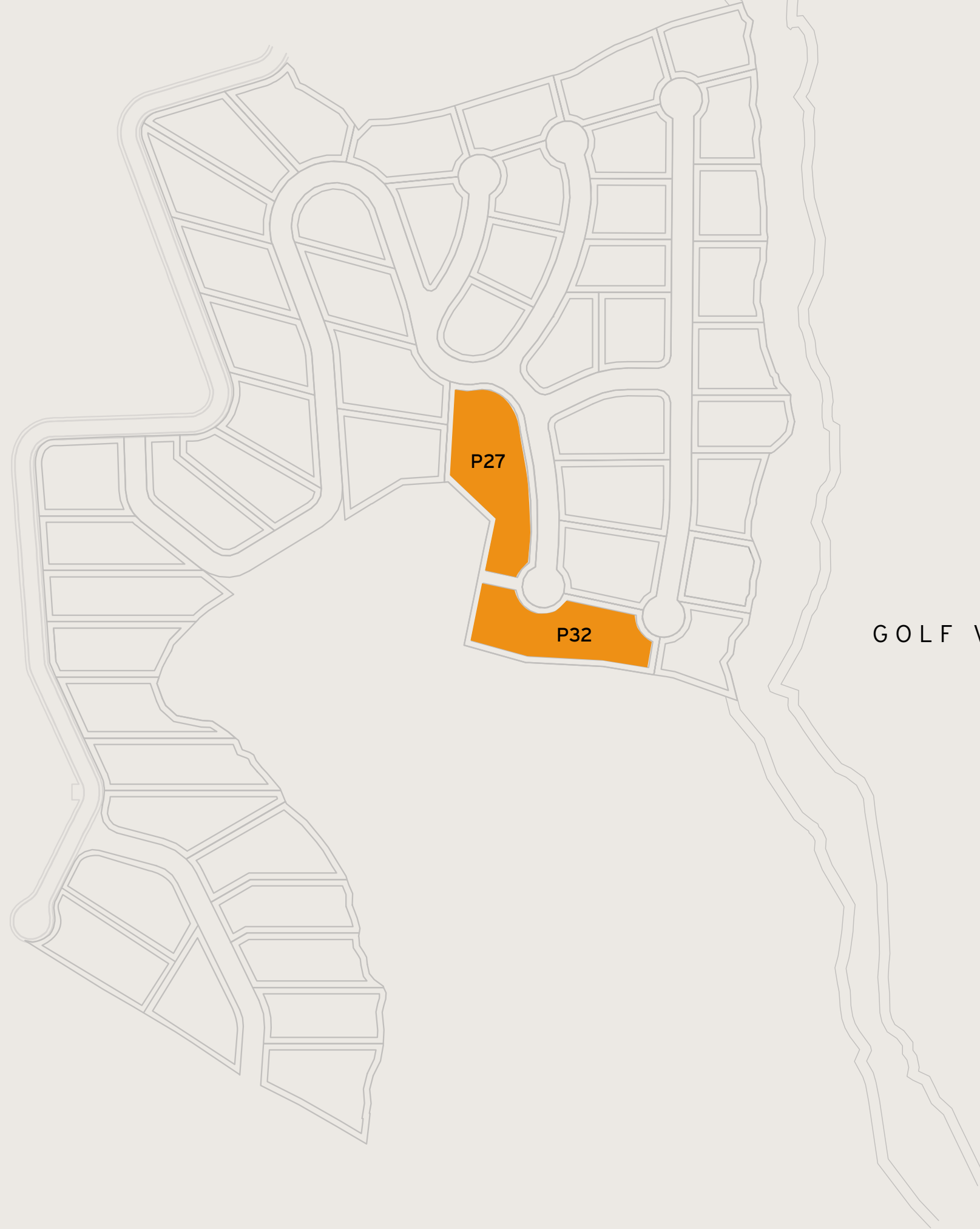
SQFT 13,498 - 15,608

**Disclaimer:** All pictures, plans, layouts, information, data and details included in this brochure are indicative only and may change at any time up to the final 'as built' status in accordance with final designs of the project, regulatory approvals and planning permissions. All accessories and interior finishes such as wallpaper, chandeliers, furniture, electronics, white goods, curtains, hard and soft landscaping, pavements, features, gym, and other elements displayed in the brochure, or between the plot boundary, are not part of the unit and are shown for illustrative purposes only.

PLOT SIZE / SQM 2,476 - 2,881

SQFT 26,651 - 31,011

Including total indoor & outdoor built up area.



GOLF VIEWS

SEA VIEWS



# T/ERRA V/VA

## DIAMANTE VILLAS

<b>6 - BED</b>	<b>SQM</b> 1,254 - 1,450
	<b>SQFT</b> 13,498 - 15,608

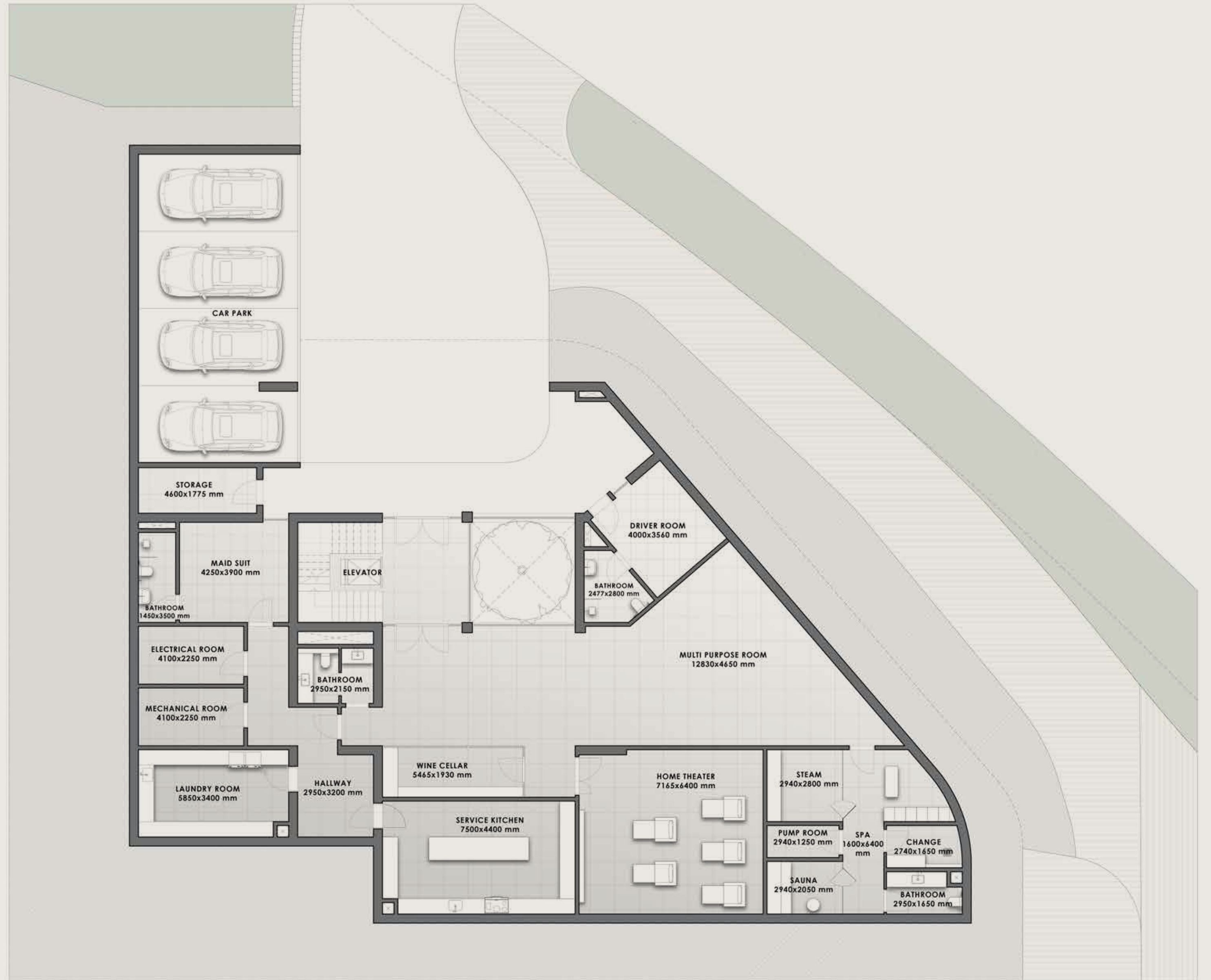
<b>PLOT SIZE</b>	
<b>SQM</b>	2,476 - 2,881
<b>SQFT</b>	26,651 - 31,011

Including total indoor & outdoor built up area.



### BASEMENT

**Disclaimer:** All pictures, plans, layouts, information, data and details included in this brochure are indicative only and may change at any time up to the final 'as built' status in accordance with final designs of the project, regulatory approvals and planning permissions. All accessories and interior finishes such as wallpaper, chandeliers, furniture, electronics, white goods, curtains, hard and soft landscaping, pavements, features, gym, and other elements displayed in the brochure, or between the plot boundary, are not part of the unit and are shown for illustrative purposes only.



T/ERRA V/VA

# DIAMANTE VILLAS

6 - B E D	<b>SQM</b> 1,254 - 1,450
	<b>SQFT</b> 13,498 - 15,608

## PLOT SIZE

<b>SQM</b>	2,476 - 2,881
<b>SQFT</b>	26,651 - 31,011

*Including total indoor & outdoor built up area.*



GROUND FLOOR



**Disclaimer:** All pictures, plans, layouts, information, data and details included in this brochure are indicative only and may change at any time up to the final 'as built' status in accordance with final designs of the project, regulatory approvals and planning permissions. All accessories and interior finishes such as wallpaper, chandeliers, furniture, electronics, white goods, curtains, hard and soft landscaping, pavements, features, gym, and other elements displayed in the brochure, or between the plot boundary, are not part of the unit and are shown for illustrative purposes only.

T/ERRA V/VA

# DIAMANTE VILLAS

<b>6 - BED</b>	<b>SQM</b> 1,254 - 1,450
	<b>SQFT</b> 13,498 - 15,608

**PLOT SIZE**

<b>SQM</b>	2,476 - 2,881
<b>SQFT</b>	26,651 - 31,011

*Including total indoor & outdoor built up area.*



FIRST FLOOR

**Disclaimer:** All pictures, plans, layouts, information, data and details included in this brochure are indicative only and may change at any time up to the final 'as built' status in accordance with final designs of the project, regulatory approvals and planning permissions. All accessories and interior finishes such as wallpaper, chandeliers, furniture, electronics, white goods, curtains, hard and soft landscaping, pavements, features, gym, and other elements displayed in the brochure, or between the plot boundary, are not part of the unit and are shown for illustrative purposes only.



T/ERRA V/VA

# DIAMANTE VILLAS

6 - B E D	<b>SQM</b> 1,254 - 1,450
	<b>SQFT</b> 13,498 - 15,608

## PLOT SIZE

SQM 2,476 - 2,881

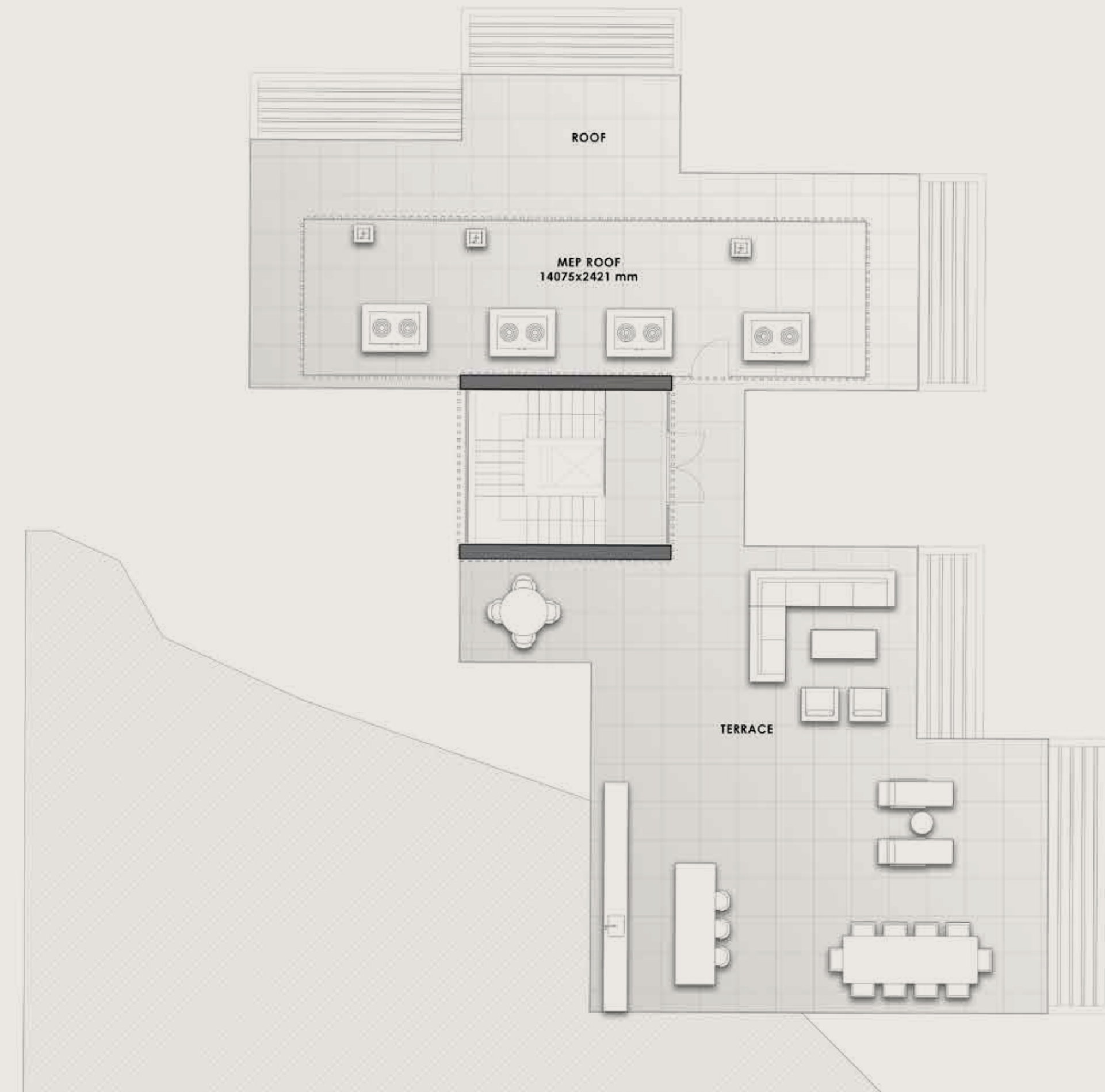
SQFT 26,651 - 31,011

*Including total indoor & outdoor built up area.*

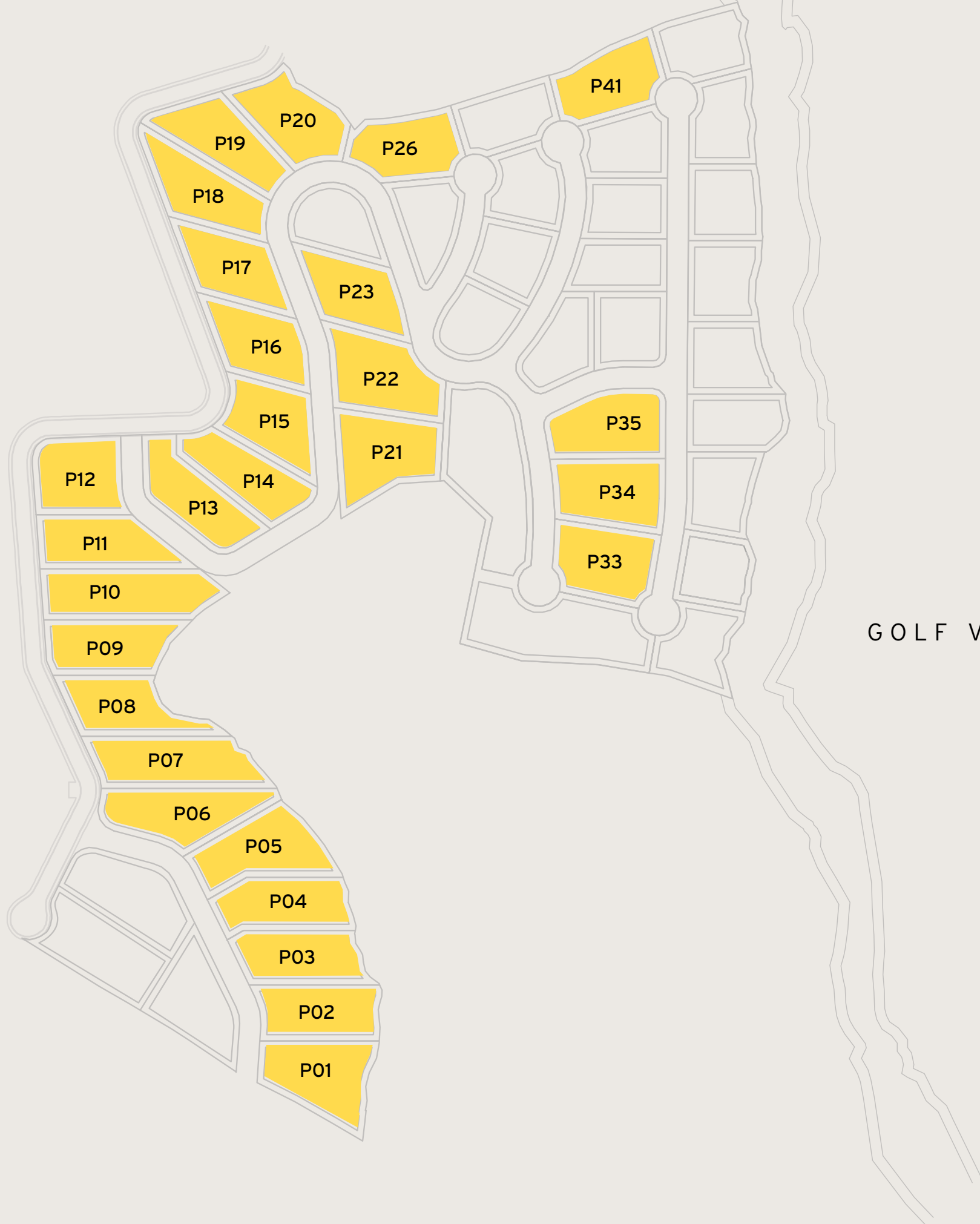


## ROOFTOP TERRACE

**Disclaimer:** All pictures, plans, layouts, information, data and details included in this brochure are indicative only and may change at any time up to the final 'as built' status in accordance with final designs of the project, regulatory approvals and planning permissions. All accessories and interior finishes such as wallpaper, chandeliers, furniture, electronics, white goods, curtains, hard and soft landscaping, pavements, features, gym, and other elements displayed in the brochure, or between the plot boundary, are not part of the unit and are shown for illustrative purposes only.



# T/ERRA V/VA



GOLF VIEWS

SEA VIEWS

# ZAFIRO VILLAS

5 - B E D

**SQM** 863 - 1,034

**SQFT** 9,289 - 11,130

**Disclaimer:** All pictures, plans, layouts, information, data and details included in this brochure are indicative only and may change at any time up to the final 'as built' status in accordance with final designs of the project, regulatory approvals and planning permissions. All accessories and interior finishes such as wallpaper, chandeliers, furniture, electronics, white goods, curtains, hard and soft landscaping, pavements, features, gym, and other elements displayed in the brochure, or between the plot boundary, are not part of the unit and are shown for illustrative purposes only.

**PLOT SIZE** / **SQM** 1,389 - 1,874

**SQFT** 14,951 - 20,172

*Including total indoor & outdoor built up area.*





T/ERRA V/VA

# ZAFIRO VILLAS

5 - B E D

**SQM**  
863 - 1,034

**SQFT**  
9,289 - 11,130

**PLOT SIZE**

**SQM** 1,389 - 1,874

**SQFT** 14,951 - 20,172

*Including total indoor & outdoor built up area.*



## BASEMENT



**Disclaimer:** All pictures, plans, layouts, information, data and details included in this brochure are indicative only and may change at any time up to the final 'as built' status in accordance with final designs of the project, regulatory approvals and planning permissions. All accessories and interior finishes such as wallpaper, chandeliers, furniture, electronics, white goods, curtains, hard and soft landscaping, pavements, features, gym, and other elements displayed in the brochure, or between the plot boundary, are not part of the unit and are shown for illustrative purposes only.

T/ERRA V/VA

# ZAFIRO VILLAS

5 - B E D	<b>SQM</b> 863 - 1,034
	<b>SQFT</b> 9,289 - 11,130

## PLOT SIZE

<b>SQM</b>	1,389 - 1,874
<b>SQFT</b>	14,951 - 20,172

*Including total indoor & outdoor built up area.*



## GROUND FLOOR

**Disclaimer:** All pictures, plans, layouts, information, data and details included in this brochure are indicative only and may change at any time up to the final 'as built' status in accordance with final designs of the project, regulatory approvals and planning permissions. All accessories and interior finishes such as wallpaper, chandeliers, furniture, electronics, white goods, curtains, hard and soft landscaping, pavements, features, gym, and other elements displayed in the brochure, or between the plot boundary, are not part of the unit and are shown for illustrative purposes only.



T/ERRA V/VA

# ZAFIRO VILLAS

5 - B E D

**SQM**  
863 - 1,034

**SQFT**  
9,289 - 11,130

**PLOT SIZE**

**SQM** 1,389 - 1,874

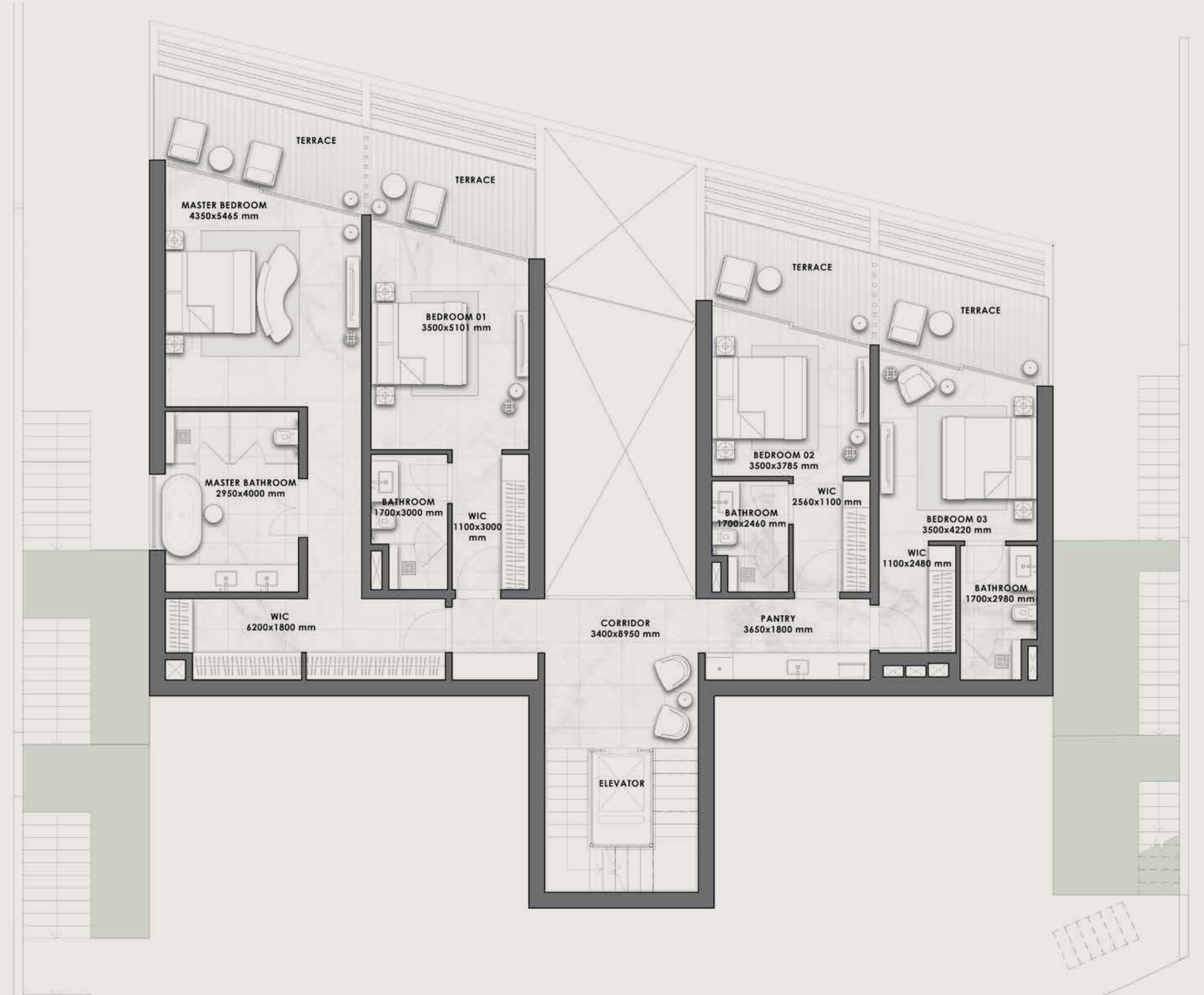
**SQFT** 14,951 - 20,172

*Including total indoor & outdoor built up area.*



FIRST  
FLOOR

**Disclaimer:** All pictures, plans, layouts, information, data and details included in this brochure are indicative only and may change at any time up to the final 'as built' status in accordance with final designs of the project, regulatory approvals and planning permissions. All accessories and interior finishes such as wallpaper, chandeliers, furniture, electronics, white goods, curtains, hard and soft landscaping, pavements, features, gym, and other elements displayed in the brochure, or between the plot boundary, are not part of the unit and are shown for illustrative purposes only.



T/ERRA V/VA

# ZAFIRO VILLAS

5 - B E D	<b>SQM</b> 863 - 1,034
	<b>SQFT</b> 9,289 - 11,130

## PLOT SIZE

<b>SQM</b>	1,389 - 1,874
<b>SQFT</b>	14,951 - 20,172

*Including total indoor & outdoor built up area.*

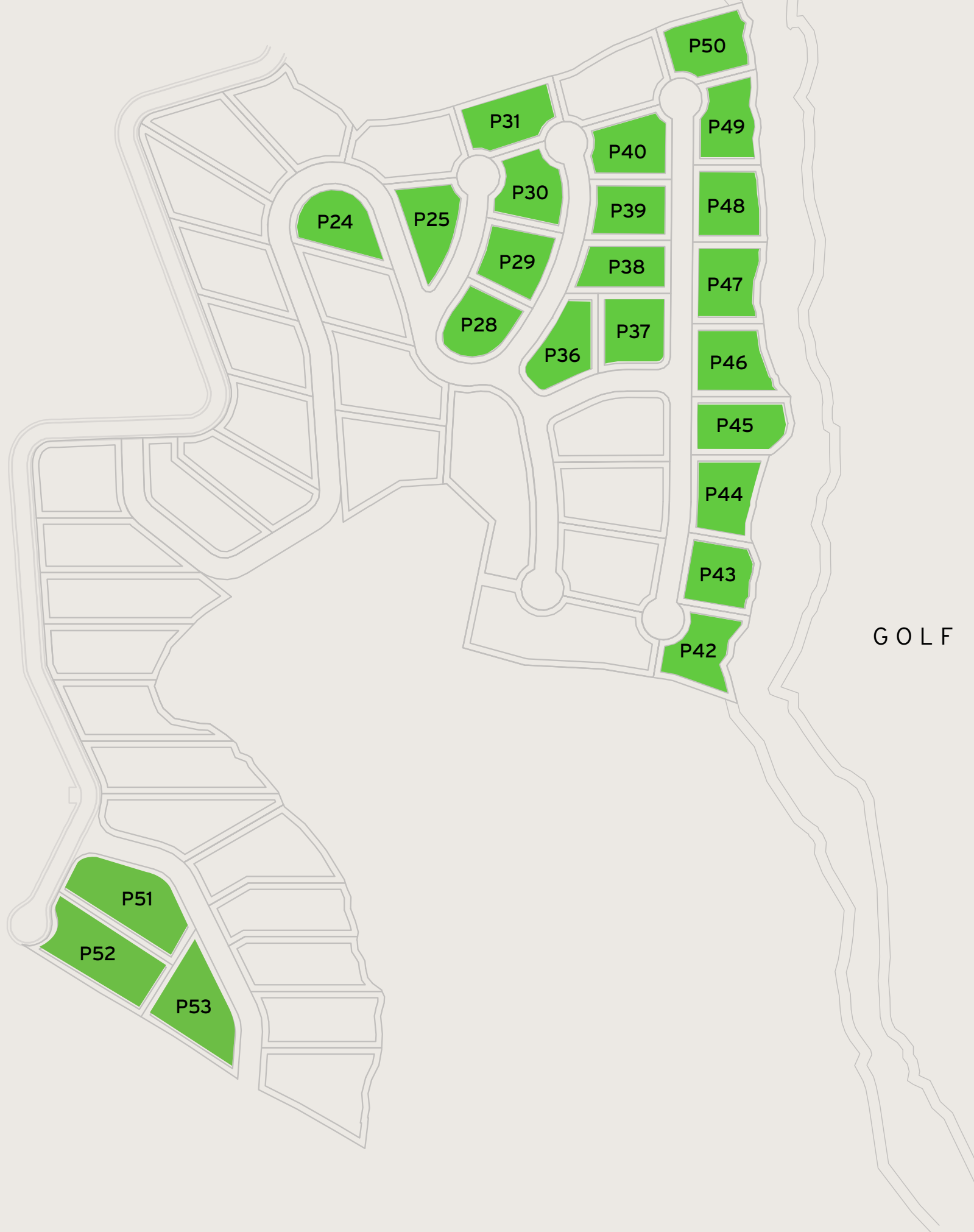


## ROOFTOP TERRACE

**Disclaimer:** All pictures, plans, layouts, information, data and details included in this brochure are indicative only and may change at any time up to the final 'as built' status in accordance with final designs of the project, regulatory approvals and planning permissions. All accessories and interior finishes such as wallpaper, chandeliers, furniture, electronics, white goods, curtains, hard and soft landscaping, pavements, features, gym, and other elements displayed in the brochure, or between the plot boundary, are not part of the unit and are shown for illustrative purposes only.



# T/ERRA V/VA



GOLF VIEWS

SEA VIEWS

## ESMERALDA VILLAS

4 - B E D

SQM 680 - 822

SQFT 7,320 - 8,848

**Disclaimer:** All pictures, plans, layouts, information, data and details included in this brochure are indicative only and may change at any time up to the final 'as built' status in accordance with final designs of the project, regulatory approvals and planning permissions. All accessories and interior finishes such as wallpaper, chandeliers, furniture, electronics, white goods, curtains, hard and soft landscaping, pavements, features, gym, and other elements displayed in the brochure, or between the plot boundary, are not part of the unit and are shown for illustrative purposes only.

PLOT SIZE / SQM 1,005 - 1,669

SQFT 10,818 - 17,965

Including total indoor & outdoor built up area.

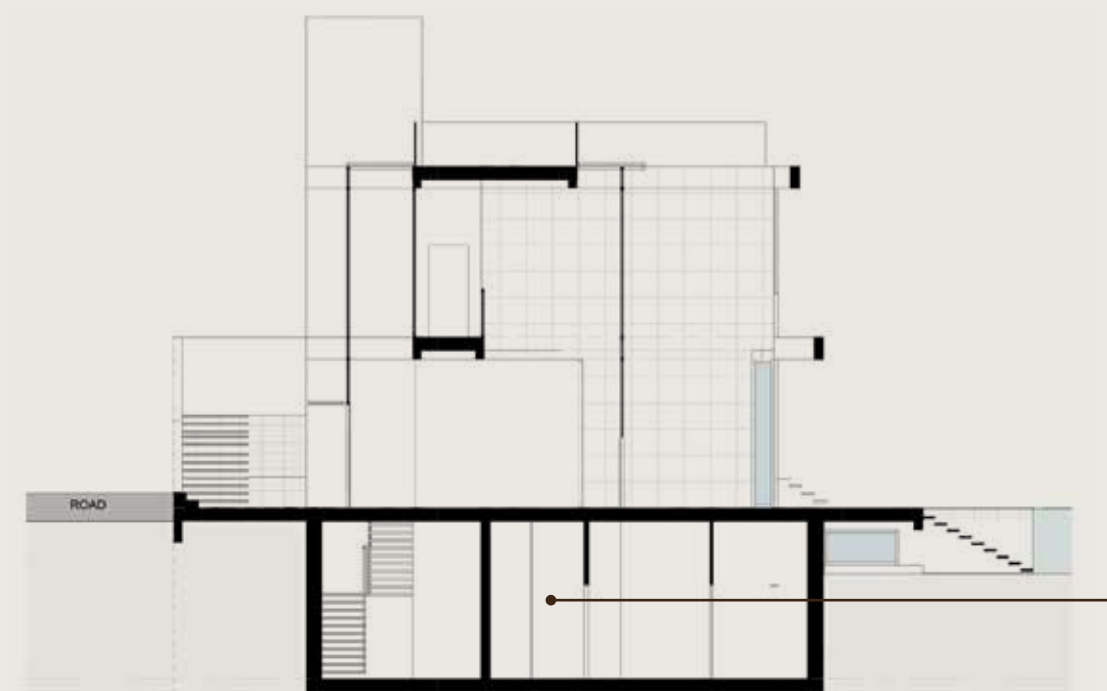


T/ERRA V/VA

# ESMERALDA VILLAS

<b>4 - BED</b>	<b>SQM</b> 680 - 822
	<b>SQFT</b> 7,320 - 8,848
<b>PLOT SIZE</b>	
<b>SQM</b>	1,005 - 1,669
<b>SQFT</b>	10,818 - 17,965

Including total indoor & outdoor built up area.



## BASEMENT

**Disclaimer:** All pictures, plans, layouts, information, data and details included in this brochure are indicative only and may change at any time up to the final 'as built' status in accordance with final designs of the project, regulatory approvals and planning permissions. All accessories and interior finishes such as wallpaper, chandeliers, furniture, electronics, white goods, curtains, hard and soft landscaping, pavements, features, gym, and other elements displayed in the brochure, or between the plot boundary, are not part of the unit and are shown for illustrative purposes only.



T/ERRA V/VA

# ESMERALDA VILLAS

4 - B E D

**SQM**  
680 - 822

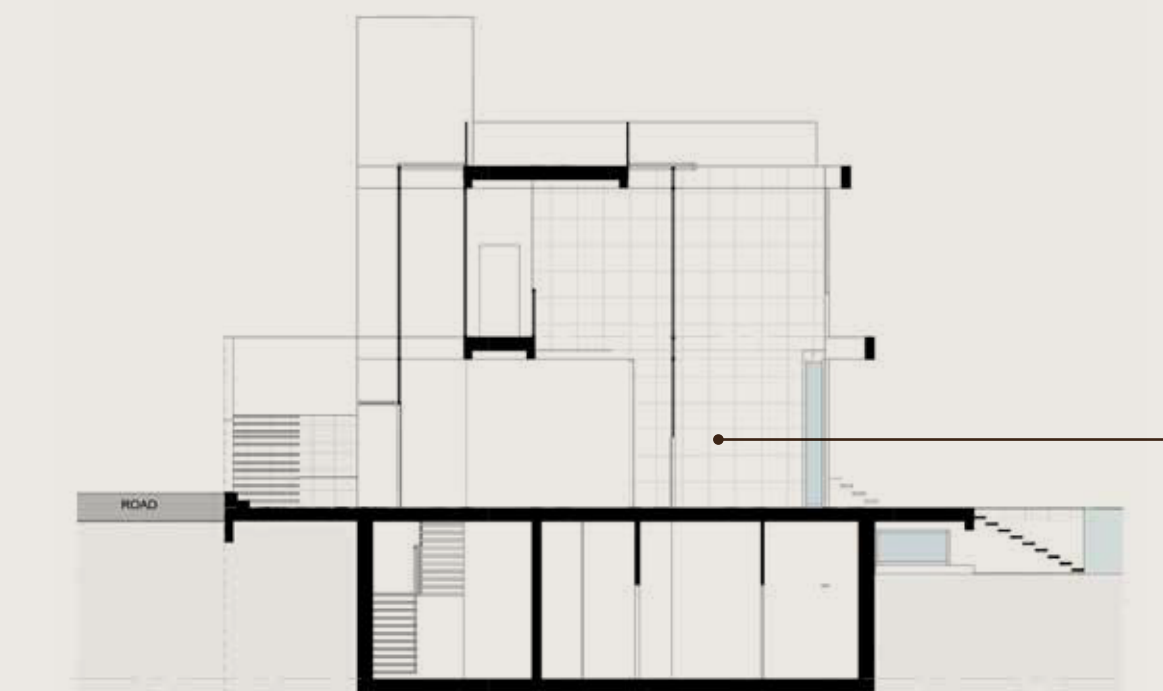
**SQFT**  
7,320 - 8,848

**PLOT SIZE**

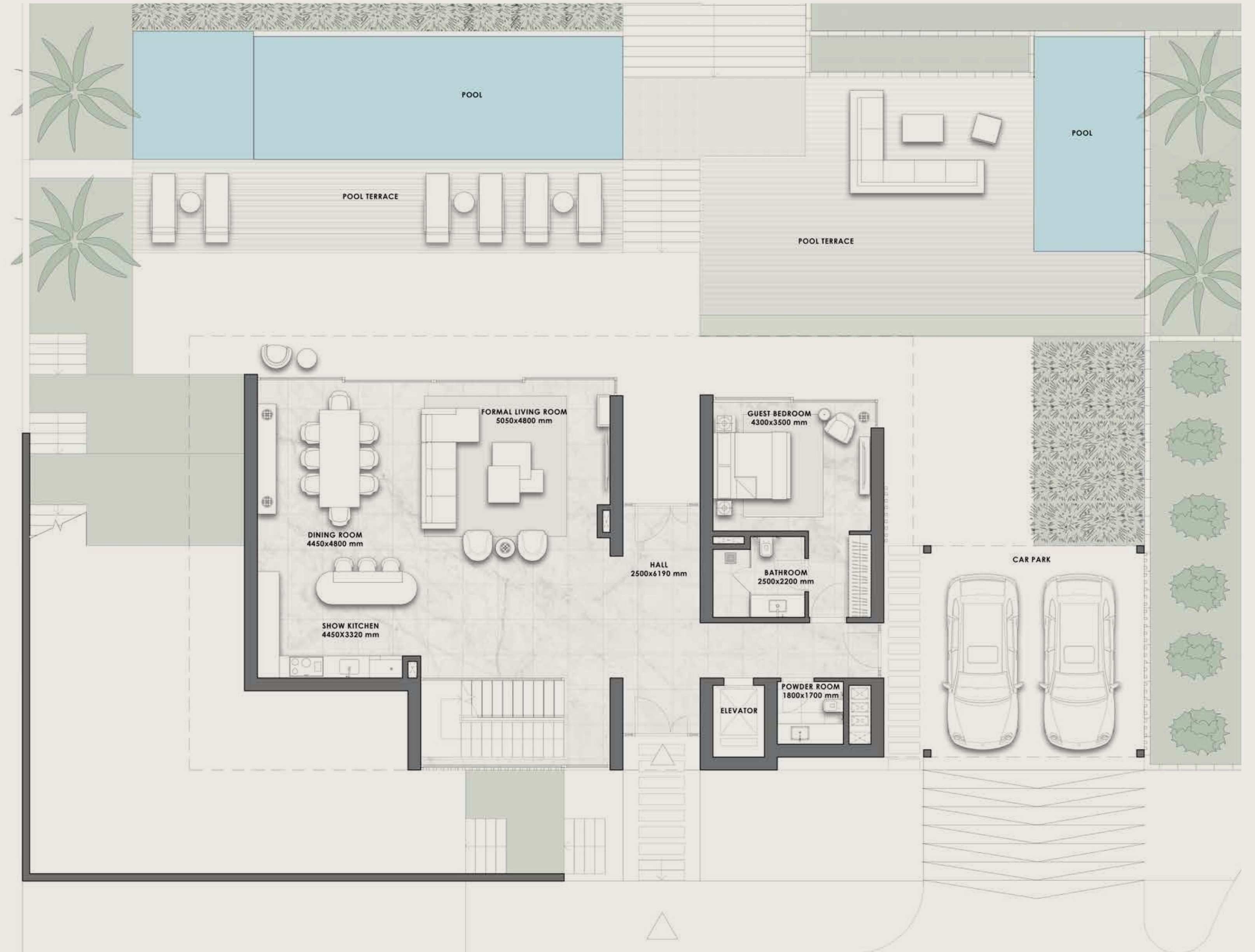
**SQM** 1,005 - 1,669

**SQFT** 10,818 - 17,965

*Including total indoor & outdoor built up area.*



**GROUND  
FLOOR**



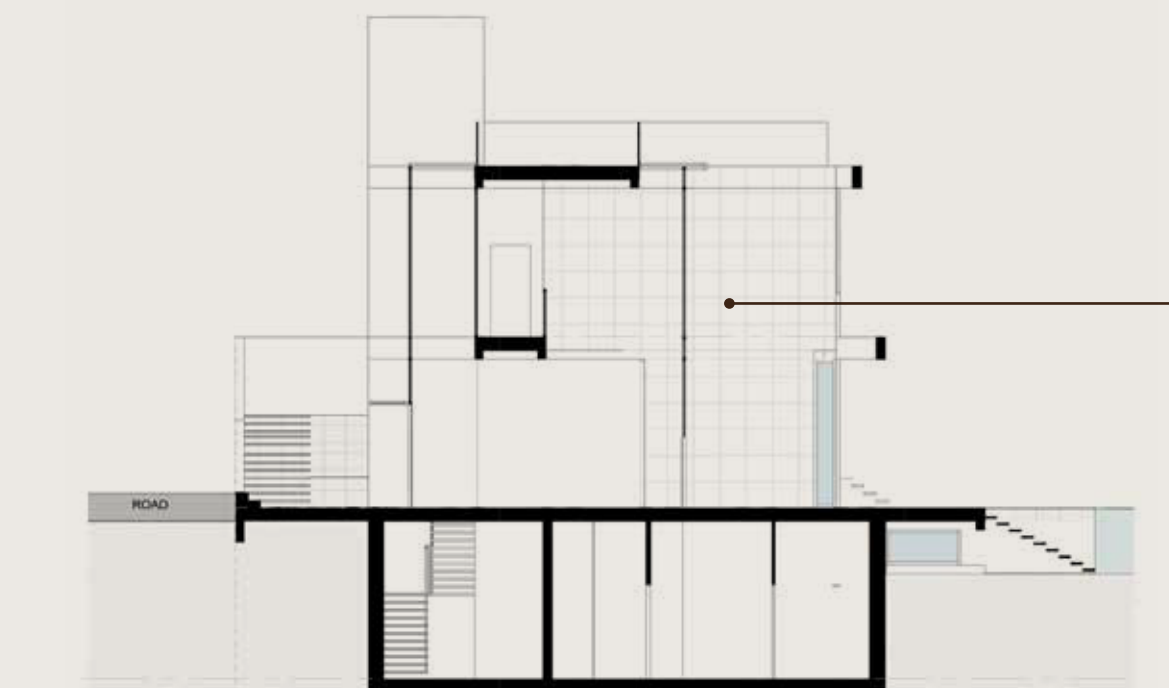
**Disclaimer:** All pictures, plans, layouts, information, data and details included in this brochure are indicative only and may change at any time up to the final 'as built' status in accordance with final designs of the project, regulatory approvals and planning permissions. All accessories and interior finishes such as wallpaper, chandeliers, furniture, electronics, white goods, curtains, hard and soft landscaping, pavements, features, gym, and other elements displayed in the brochure, or between the plot boundary, are not part of the unit and are shown for illustrative purposes only.

T/ERRA V/VA

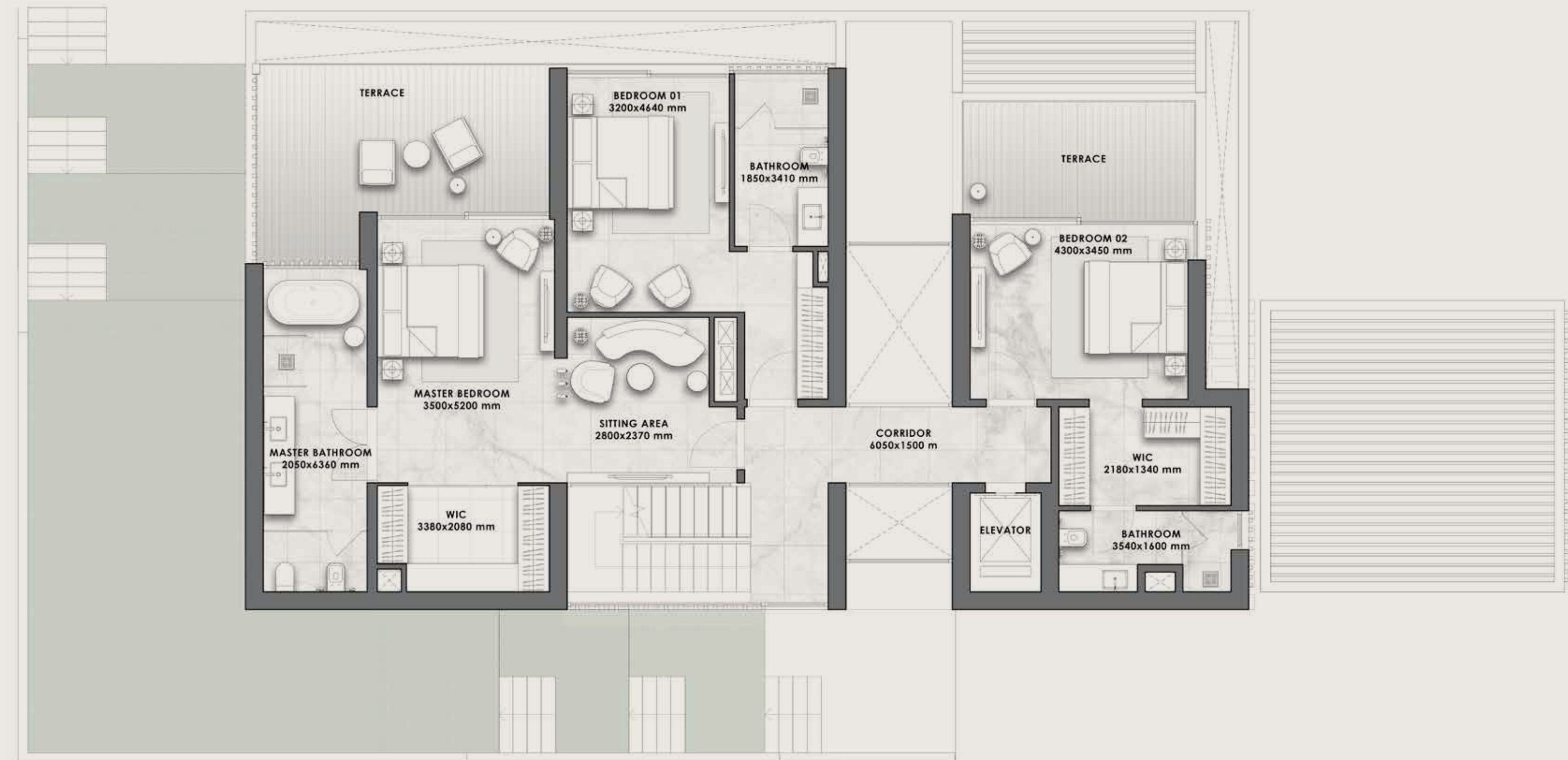
# ESMERALDA VILLAS

4 - B E D	<b>SQM</b> 680 - 822
	<b>SQFT</b> 7,320 - 8,848
<b>PLOT SIZE</b>	
<b>SQM</b>	1,005 - 1,669
<b>SQFT</b>	10,818 - 17,965

*Including total indoor & outdoor built up area.*



FIRST  
FLOOR



**Disclaimer:** All pictures, plans, layouts, information, data and details included in this brochure are indicative only and may change at any time up to the final 'as built' status in accordance with final designs of the project, regulatory approvals and planning permissions. All accessories and interior finishes such as wallpaper, chandeliers, furniture, electronics, white goods, curtains, hard and soft landscaping, pavements, features, gym, and other elements displayed in the brochure, or between the plot boundary, are not part of the unit and are shown for illustrative purposes only.

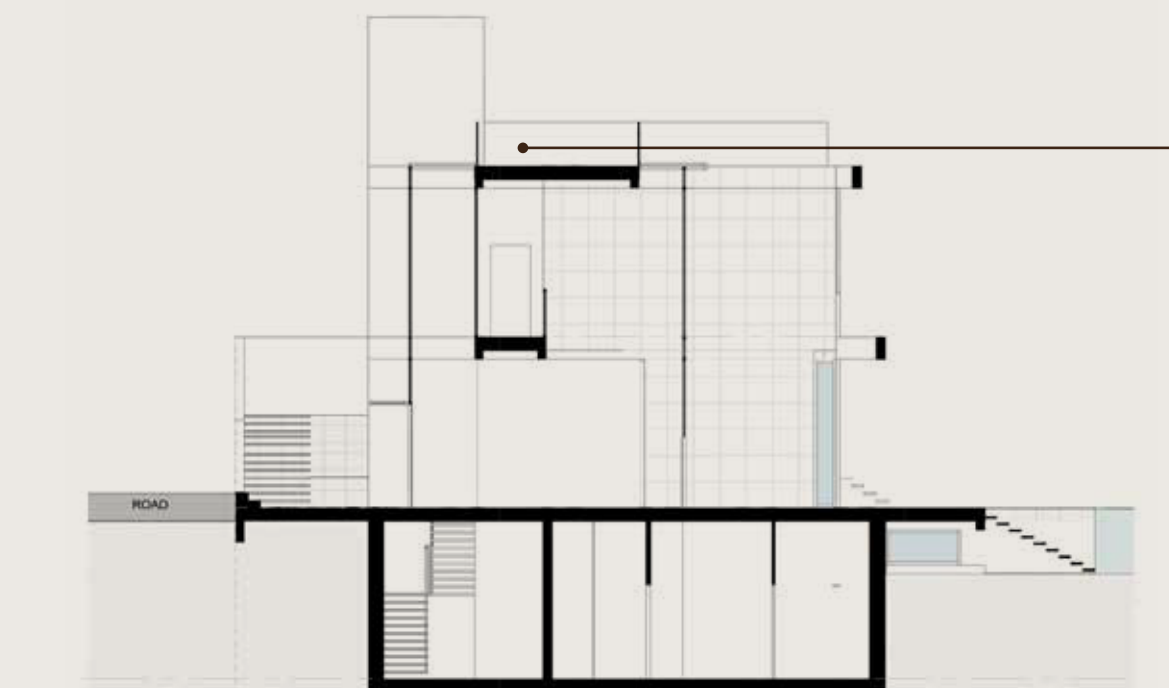


T/ERRA V/VA

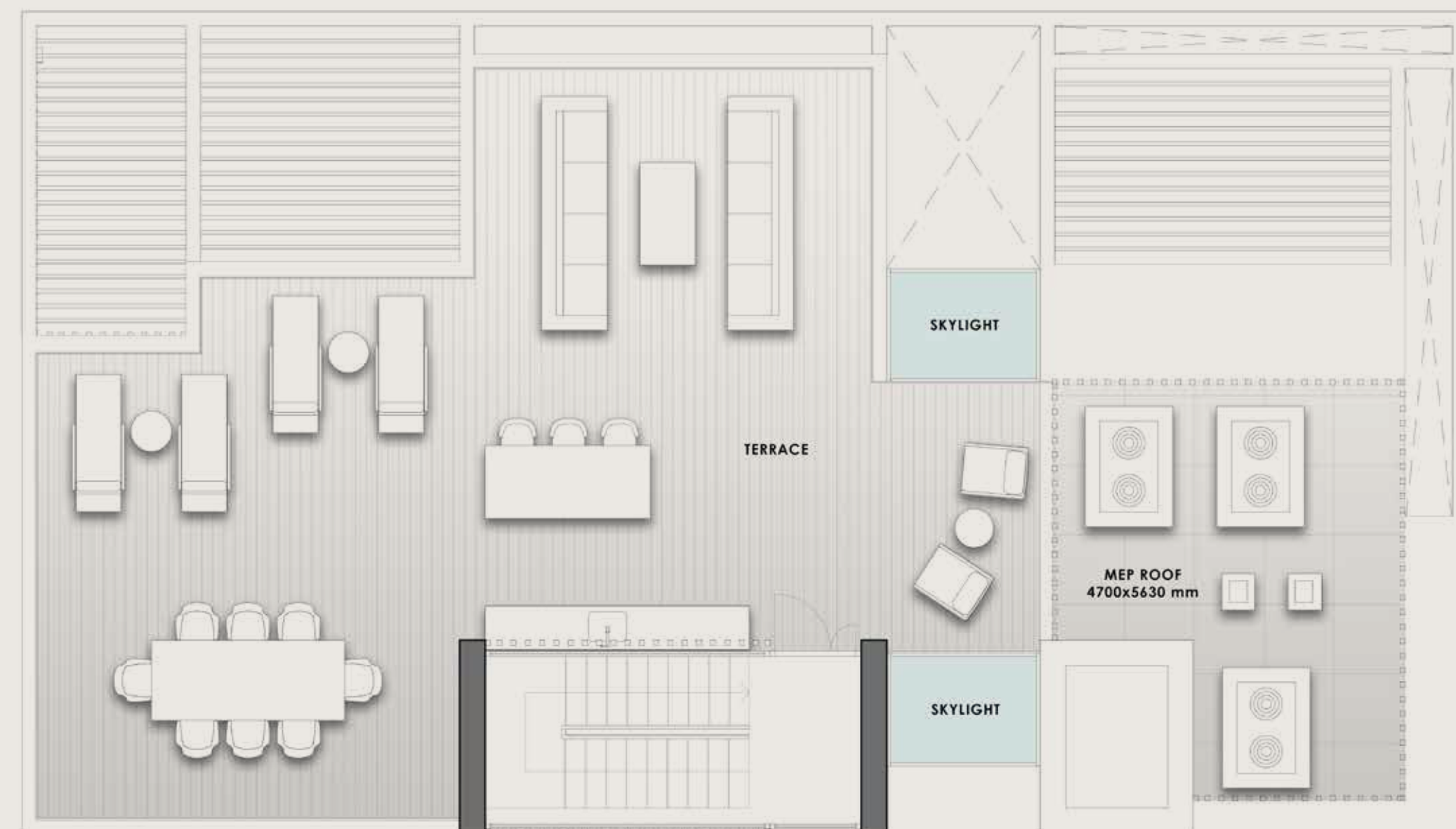
# ESMERALDA VILLAS

4 - B E D	<b>SQM</b> 680 - 822
	<b>SQFT</b> 7,320 - 8,848
<b>PLOT SIZE</b>	
<b>SQM</b>	1,005 - 1,669
<b>SQFT</b>	10,818 - 17,965

*Including total indoor & outdoor built up area.*



## ROOFTOP TERRACE



**Disclaimer:** All pictures, plans, layouts, information, data and details included in this brochure are indicative only and may change at any time up to the final 'as built' status in accordance with final designs of the project, regulatory approvals and planning permissions. All accessories and interior finishes such as wallpaper, chandeliers, furniture, electronics, white goods, curtains, hard and soft landscaping, pavements, features, gym, and other elements displayed in the brochure, or between the plot boundary, are not part of the unit and are shown for illustrative purposes only.

## Automobili Lamborghini S.p.A.

Founded in 1963, Automobili Lamborghini is headquartered in Sant'Agata Bolognese, in the province of Bologna, and produces some of the most desirable super sports cars in the world. Still rooted in its historic headquarters in the heart of Motorvalley, Lamborghini is synonymous with the highest technological expertise in the design and production of engines with extraordinary performance. The design of each model has always been unique: the language of forms is visionary and ahead of its time.

Brave, unexpected and authentic: the three values of the Sant'Agata Bolognese brand are reflected in the three models in the range, the V8 engine with Super SUV Urus, the perfect combination of power, performance, comfort and driving versatility and two super sports

cars with naturally aspirated V10 and V12 engines, the Huracán and the Aventador successor, the newborn Revuelto, the starting point to the "Direzione Cor Tauri", the hybridization and electrification of the whole Lamborghini range.

Automobili Lamborghini is today a global company with a balanced presence in the three macro-regions America, Europe/ Middle-East/Africa and Asia Pacific. Based on record commercial and financial results and in constant growth and with the support and passion of over 2,000 employees, Lamborghini is now aiming for an increasingly sustainable future, up to the introduction of a fourth model full electric, while still fully respecting the values and DNA of the brand.



LISTED ON THE  
LONDON STOCK EXCHANGE



Established in 2017 to upend the global luxury real estate market, DarGlobal combines experience and innovation to deliver the highest quality properties. World-class architects curate DarGlobal's homes that are modelled by renowned design icons; each DarGlobal home is built with the highest quality materials and maintained by experts within the field.

DarGlobal believes there is no better investment than an investment in luxury and takes pride in choosing the best-in-class locations and properties to provide lucrative investment opportunities for a distinct clientele.

BUILDING ON THE  
LEGACY OF THE  
LARGEST REAL  
ESTATE COMPANY  
IN THE REGION.

---

7

offices in  
different cities  
worldwide

29

years of  
experience

---

15K+

residential  
units delivered

8.2Bn

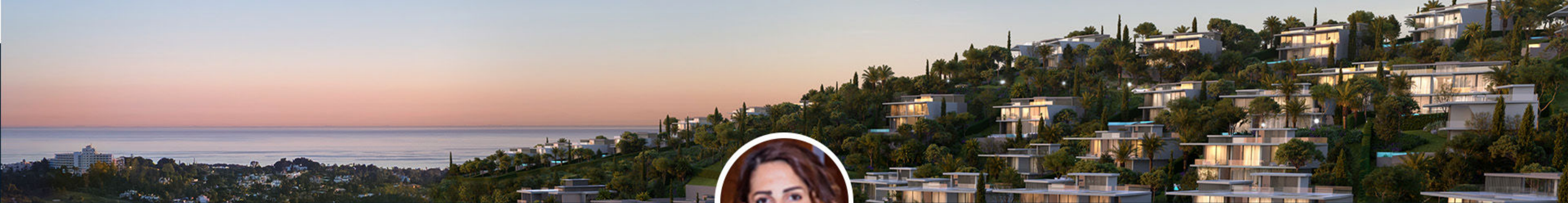
USD in assets

---

500,000 sqm

of commercial space delivered

---



First Name/Last Name

**Ms. Paula Gambrell**

Mobile

**+(971) 52 123 5390**

Email

**pgambrell@darglobal.co.uk**

Social Media



Company Name & Address

**DARGLOBAL**

**30th Floor, Jumeirah Emirates Tower,  
Dubai - United Arab Emirates**

Brokerage Certificate Number

**NA**

Trade License Number

**997915**

Tax Registration Number

**100023103300003**

Contact us

# T/ERRA V/VA

