

An aerial photograph of a residential development consisting of eight modern villas, each with a private swimming pool and landscaped garden. The villas are arranged in a semi-circular pattern along a road. Each villa is numbered from 1 to 8 in a white circle. The development is surrounded by a road and a landscaped area with trees and shrubs. The background is a dark, solid color.

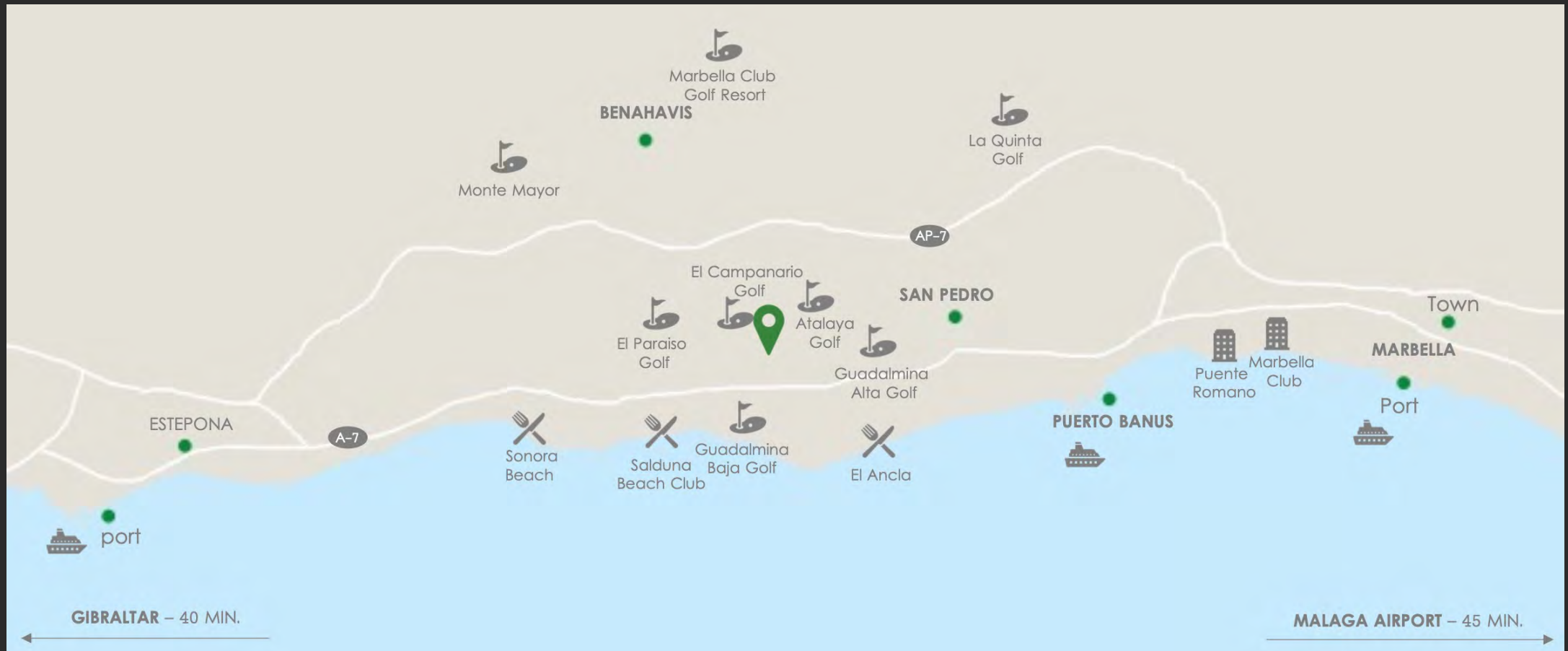
# *Villas Campanario Golf*

A collection of 8 exclusive designed residential villas, set in the heart of Golf Triangle (Campanario-Paraiso-Atalaya Golf courses)



# Location

The New Golden Mile is the name given to the stretch of coastline between San Pedro Alcántara in Marbella and Estepona. Approximately 45 minutes from both Gibraltar and Málaga airports, and within a short drive from Puerto Banús, Marbella, Estepona and San Pedro, the New Golden Mile continues to grow in popularity. It's home to some of the most established complexes, located within walking distance of shops, restaurants, schools and the beach.





# *Details*


Made up of four-bedroom contemporary villas extending out to the fairways of the Campanario Golf Course. It is the perfect infusion of nature and architecture, with stunning exteriors and exceptional interior finishes. There are several different layout types to choose from, each creating a different living experience.

Key features of each home include open plan living, fully fitted kitchens, large en-suite bedrooms and plenty of built-in storage. The larger villas give you the option of spare rooms that can be set up as home offices or as additional bedrooms if needed. They also have private pools and spacious gardens overlooking views of the golf course.





# Characteristics



Villa	Plot size	Built size	Terraces	Covered terrace	Parking	Total built	N° beds	N° bath	Pool
2	459.61m <sup>2</sup>	295.40m <sup>2</sup>	100.79m <sup>2</sup>	21.33m <sup>2</sup>	44.18m <sup>2</sup>	424.00m <sup>2</sup>	4	4	20.00m <sup>2</sup>
4	680.93m <sup>2</sup>	347.64m <sup>2</sup>	121.35m <sup>2</sup>	47.40m <sup>2</sup>	94.30m <sup>2</sup>	529.56m <sup>2</sup>	4	4	18.73m <sup>2</sup>
5	567.32m <sup>2</sup>	372.15m <sup>2</sup>	106.20m <sup>2</sup>	44.97m <sup>2</sup>	43.16m <sup>2</sup>	525.97m <sup>2</sup>	4	3.5	18.75m <sup>2</sup>
8	419.37m <sup>2</sup>	254.40m <sup>2</sup>	79.65m <sup>2</sup>	24.06m <sup>2</sup>	39.62m <sup>2</sup>	362.70m <sup>2</sup>	4	3.5	13.62m <sup>2</sup>

As to January 2024, the available villas are:

Villa 4

Villa 5

Villa 8



# Villa 8

Villa 8 will feature a modern design combining the best materials with a contemporary but at the same time cozy and timeless architecture, offering 4 bedrooms, 3 bathrooms and toilet.

There are a nice entrance hall leading to the impressive living and dining room with open plan kitchen with laundry and access to the porche with beautiful swimming pool, guest bedroom or office and guest toilet on the ground floor. The first floor consists of the master bedroom with dressing room and bathroom on suit and access to a large terrace plus two secondary bedrooms and additional bathroom.

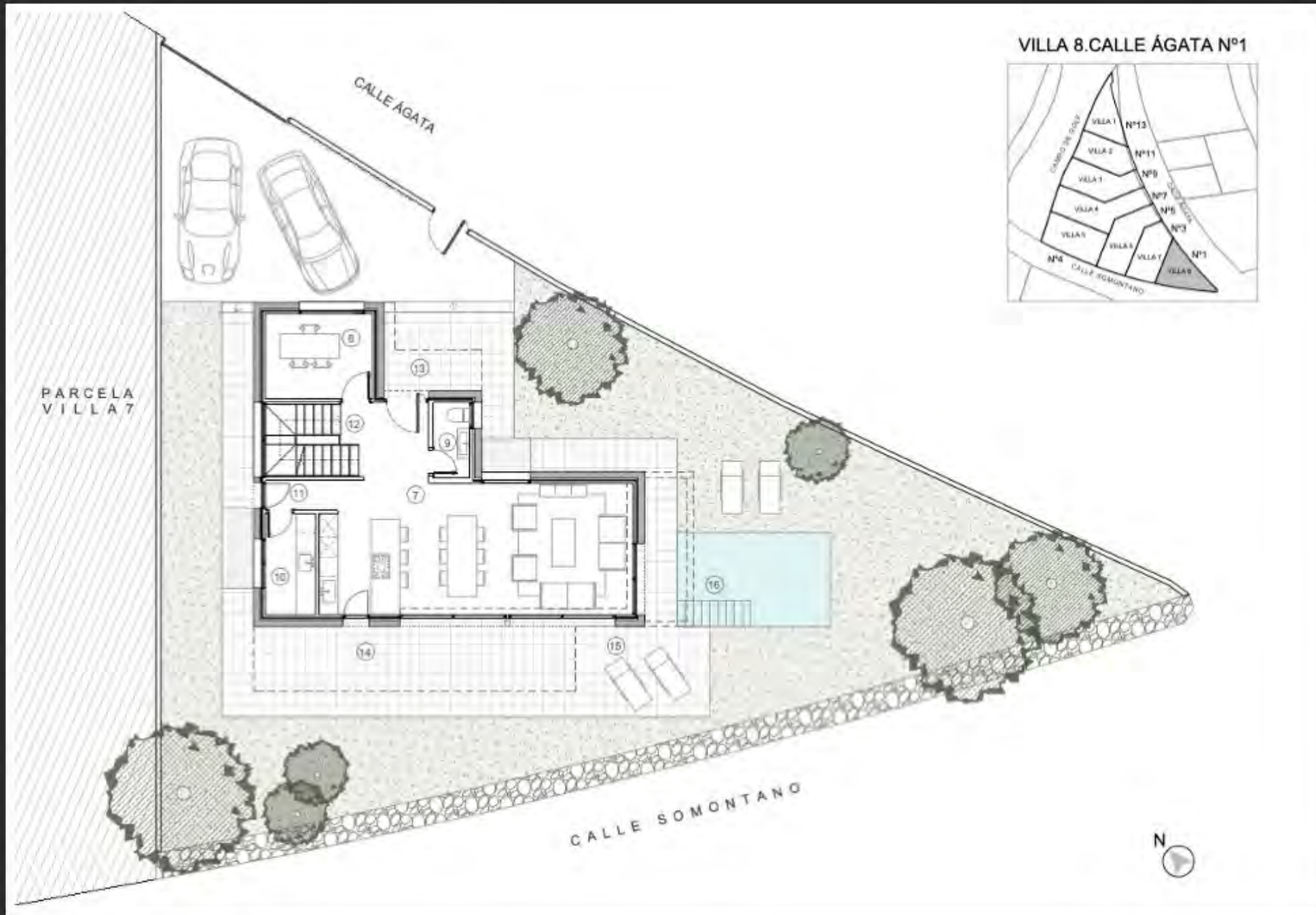
The villa also includes a 92,05m<sup>2</sup> basement with multiuse room with natural light, bathroom, storage and tech room.











# Floor plans

## Villa 8

### GROUND FLOOR

Useful size

Living-kitchen (7)	44,62m <sup>2</sup>
Office (8)	8,67m <sup>2</sup>
Toilet (9)	2,63m <sup>2</sup>
Laundry (10)	4,85m <sup>2</sup>
Hall (11)	2,03m <sup>2</sup>
Stairs (12)	5,75m <sup>2</sup>
<b>Total useful</b>	<b>69,42m<sup>2</sup></b>
<b>Total built</b>	<b>85,27m<sup>2</sup></b>

### EXTERIOR

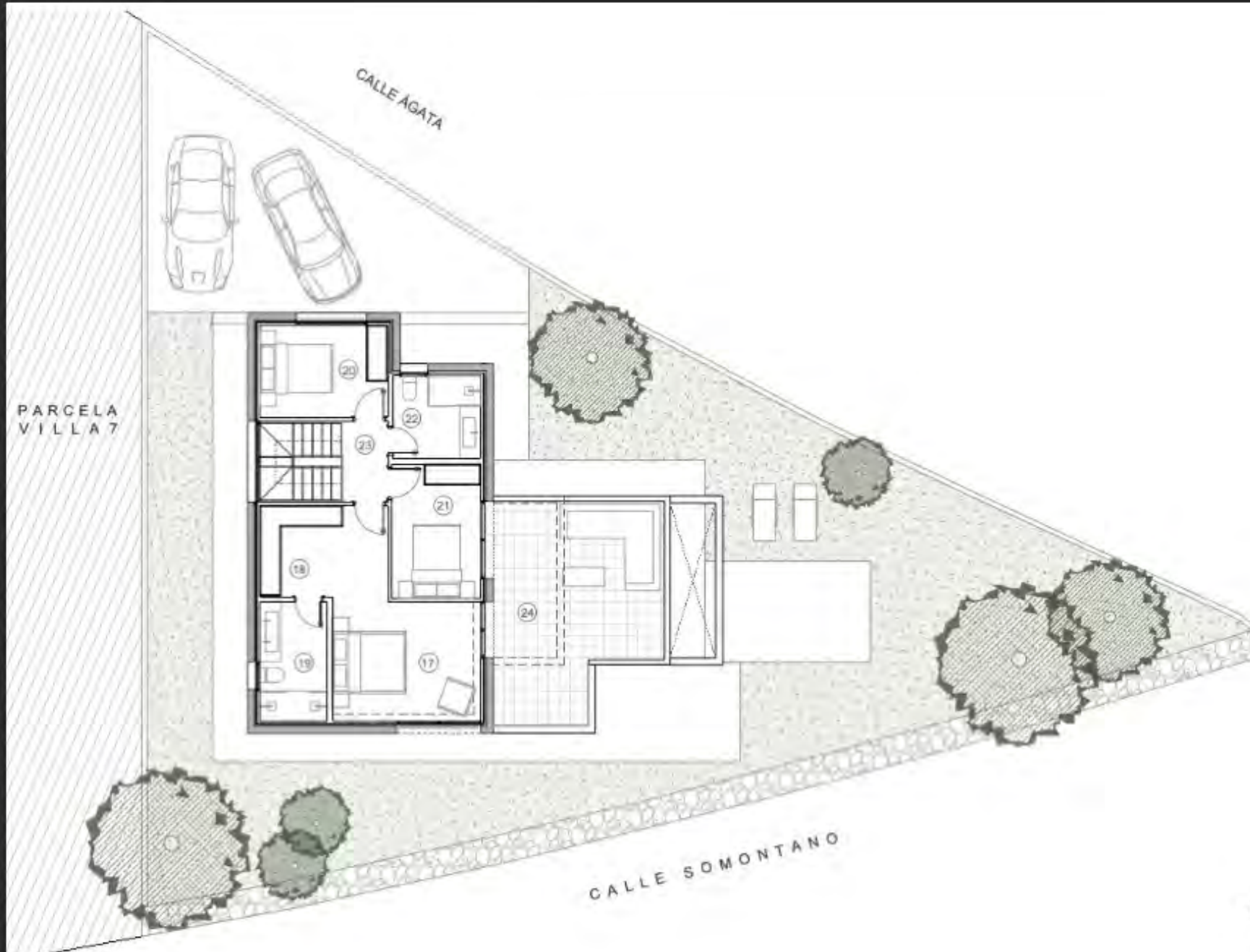
Covered terrace 1 (13)	4,28m <sup>2</sup>
Covered terrace 2 (14)	19,78m <sup>2</sup>
Terrace (15)	51,88m <sup>2</sup>
Pool (16)	13,62m <sup>2</sup>
Parking	39,62m <sup>2</sup>

### TOTAL

Plot	419,37m <sup>2</sup>
Built size	254,40m <sup>2</sup>
Total built	361,81m <sup>2</sup>

# Floor plans

## Villa 8



### FIRST FLOOR

Useful size

Master bedroom (17)	17,88m <sup>2</sup>
Dressing room (18)	6,18m <sup>2</sup>
Master bathroom (19)	6,53m <sup>2</sup>
Bedroom 1 (20)	9,54m <sup>2</sup>
Bedroom 2 (21)	9,69m <sup>2</sup>
Bathroom 2 (22)	5,92m <sup>2</sup>
Hall (23)	2,95m <sup>2</sup>
Terrace (24)	27,77m <sup>2</sup>

<b>Total useful</b>	<b>86,46m<sup>2</sup></b>
<b>Total built</b>	<b>109,45m<sup>2</sup></b>

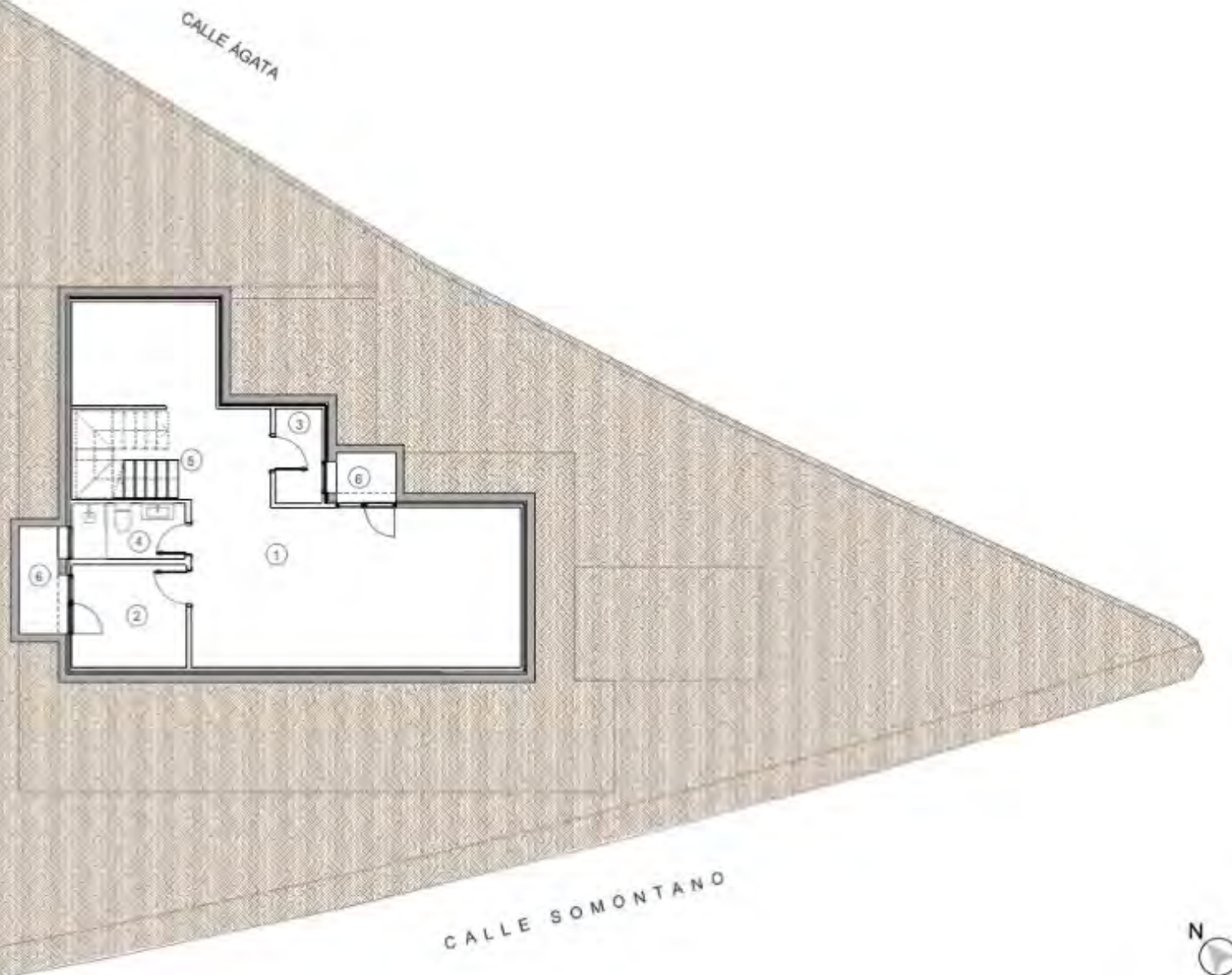
### TOTAL

<b>Plot</b>	<b>419,37m<sup>2</sup></b>
<b>Built size</b>	<b>254,40m<sup>2</sup></b>
<b>Total built</b>	<b>361,81m<sup>2</sup></b>



# Floor plans

## Villa 8



### BASEMENT

	Useful size
Multiuse room (1)	39,37m <sup>2</sup>
Storage (2)	9,51m <sup>2</sup>
Installation room (3)	2,86m <sup>2</sup>
Bathroom (4)	3,95m <sup>2</sup>
Stairs (5)	5,24m <sup>2</sup>
Patio (6)	4,60m <sup>2</sup>
<b>Total useful</b>	<b>65,59m<sup>2</sup></b>
<b>Total built</b>	<b>92,05m<sup>2</sup></b>

### TOTAL

<b>Plot</b>	<b>419,37m<sup>2</sup></b>
<b>Built size</b>	<b>254,40m<sup>2</sup></b>
<b>Total built</b>	<b>361,81m<sup>2</sup></b>



