



REF: 10.30 - VILLA VALENTINA

A Stunning 5 Bedroom Signature Villa Project in Montemayor, Benahavís

Presenting a contemporary Turnkey Signature Villa designed across two angled levels. A grand XXL window feature graces the spacious hall, creating a comfortable layout that separates sleeping quarters from the main living and entertainment spaces. Accessed from the upper level, the modern home boasts a sleek driveway with wooden accents leading to a covered parking area for 2 cars.

The top-floor master suite includes a dressing room and spacious bathroom, complemented by a private terrace offering relaxing views of the surrounding nature. Just below, in the same wing, you'll find 4 ample ensuite bedrooms, each with a dressing area and sliding doors to the garden. Further on the lower level, the southwest-facing section of the villa is thoughtfully designed to benefit from the natural sunlight. An open-plan kitchen, dining, and living area layout, extends to outdoor spaces perfect for dining and lounging, around a tempting swimming pool. A special sunken lounge area with a fire pit adds a touch of enchantment to starlit evenings.

Nestled in the prestigious MonteMayor enclave within the renowned municipality of Benahavís, this gated community boasts 24-hour surveillance security amidst a stunning natural setting. Located between Marbella and Estepona, it's a short drive from coastal beaches, amenities, leisure spots, shopping areas, and some of the finest golf courses.

- **Build on 2 Levels**
- **5 Bedrooms En Suite**
- **Open Plan Living area**
- **Fully Fitted Kitchen and Bathrooms**
- **Covered Parking for 2 Cars**
- **Gated community w/ 24 hr Security**
- **Turnkey Delivery, with highest quality standards and maximal structural garanties.**

Plot: 2775 m²

Living Area: 400 m²

Terraces: 233 m²

Total Build: 633 m²

2.350.000 €

**(VAT/ Notary Fees
Not Included)**



VILLA VALENTINA



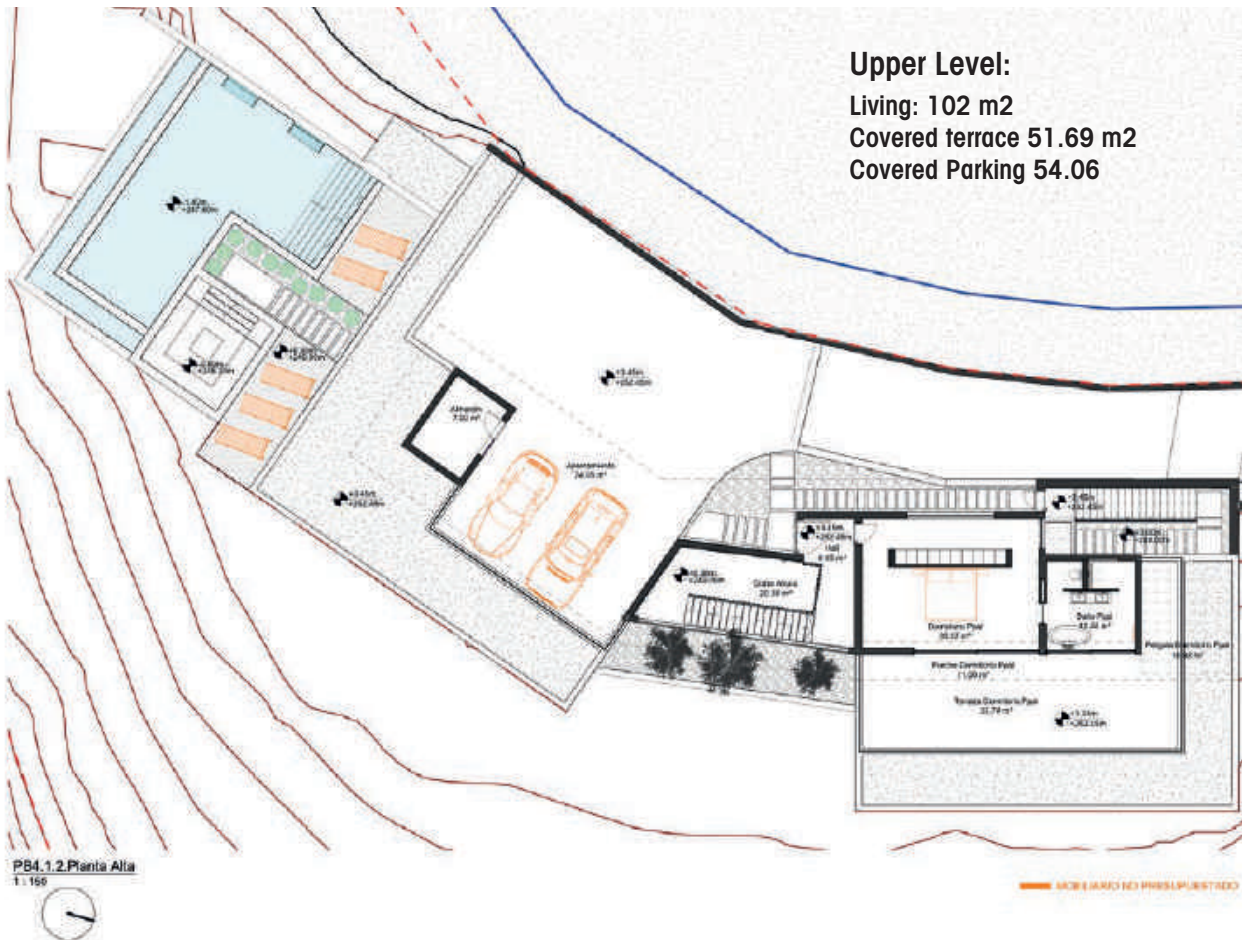
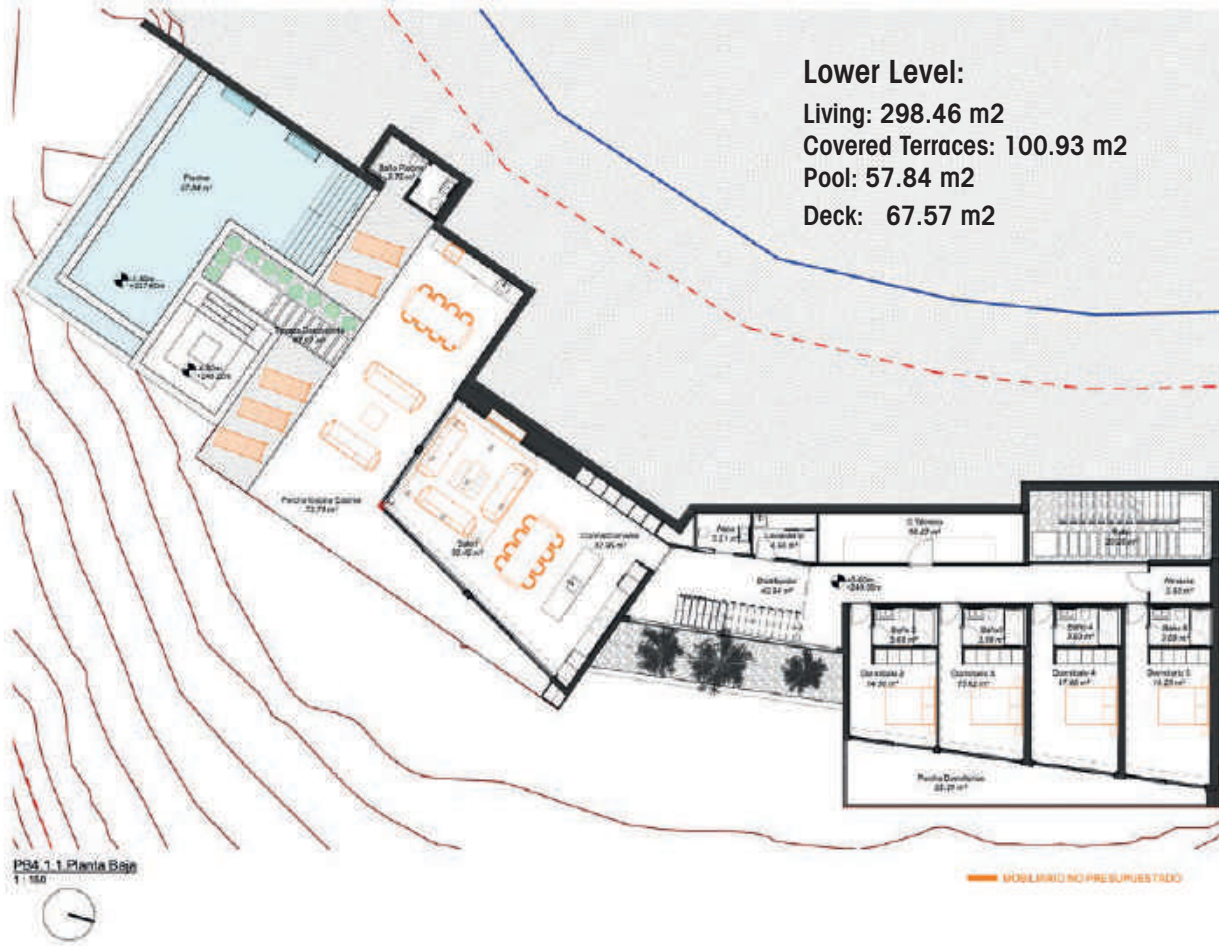
VILLA VALENTINA



VILLA VALENTINA



VILLA VALENTINA





VILLA VALENTINA