

THE TIME LIVED THE TIME LIVED THE TIME LIVED

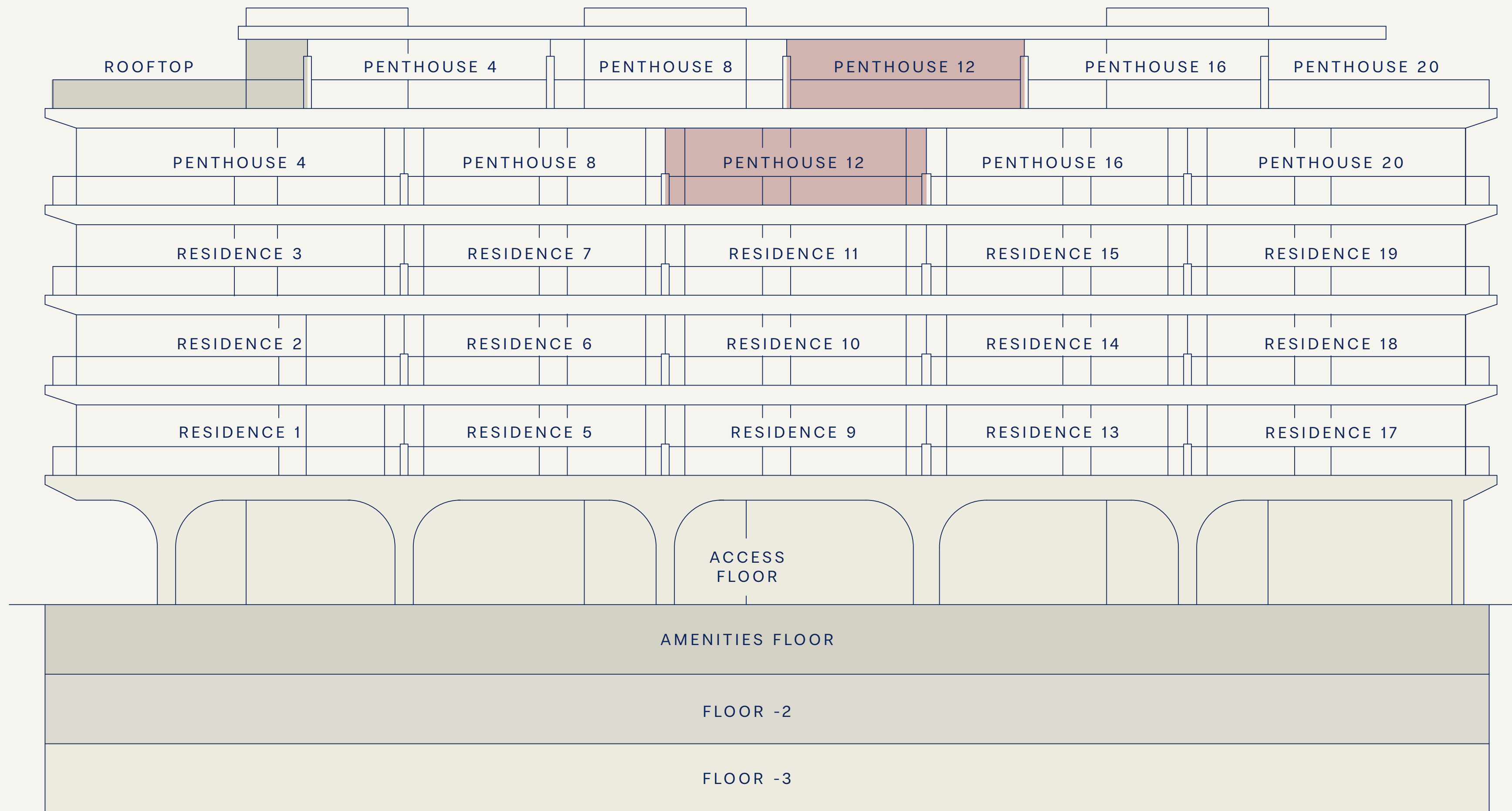
NACARÉ

ESTEPONA ✕ MÁLAGA

PENTHOUSE · 12

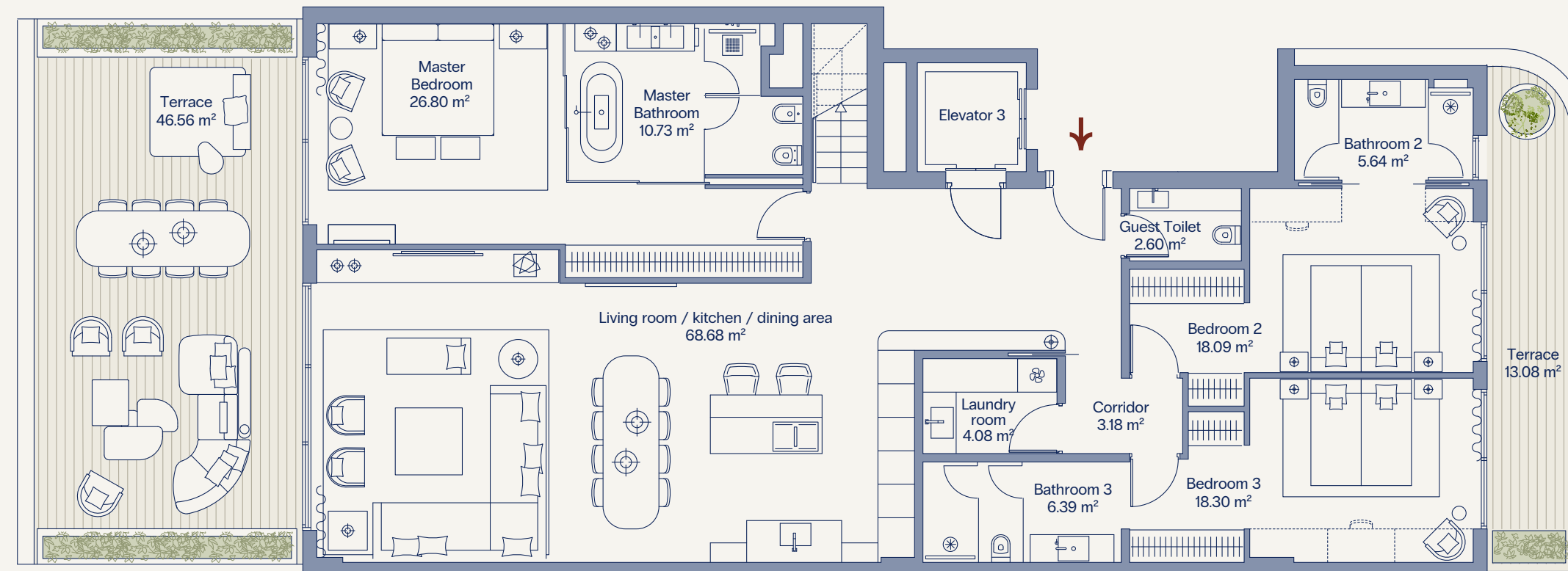


NACARÉ RESIDENCES





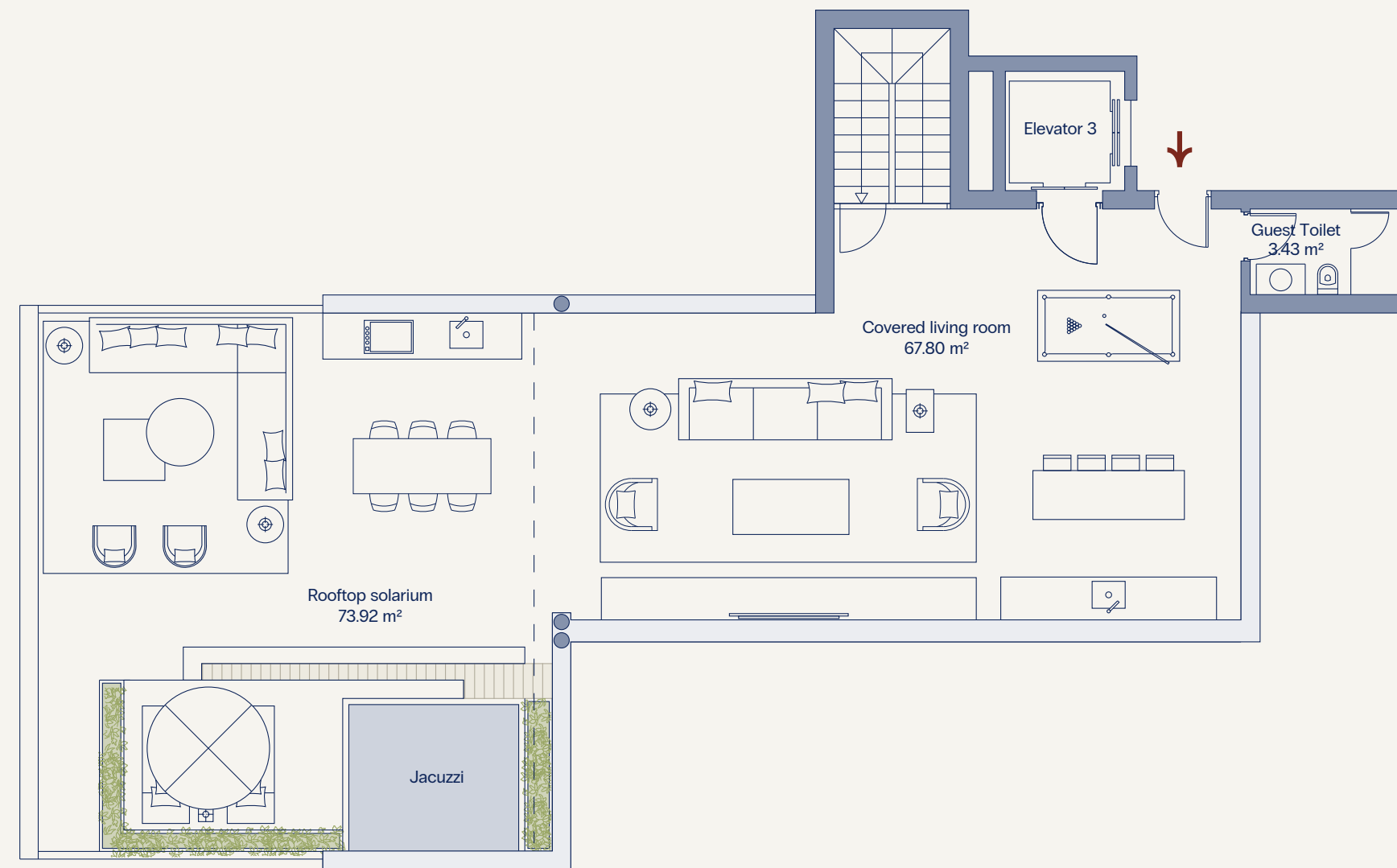
MAIN FLOOR



SEA VIEW

MOUNTAIN VIEW

ROOFTOP FLOOR



USABLE AREA

167,92 sq m
Indoor area

201,36 sq m
Outdoor terrace

Usable area: 184,71 sq m (according to Decree 218/2005)

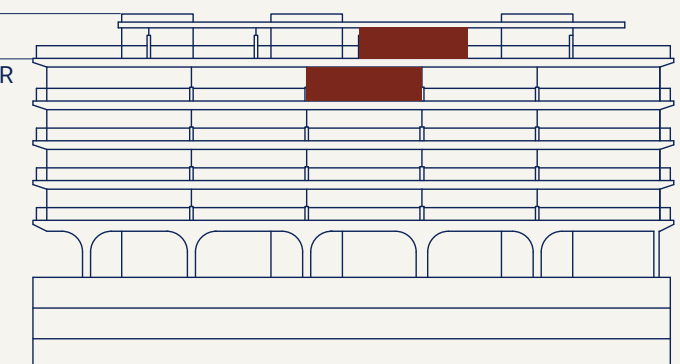
BUILT AREA

191,16 sq m
Indoor area

225,23 sq m
Covered terrace

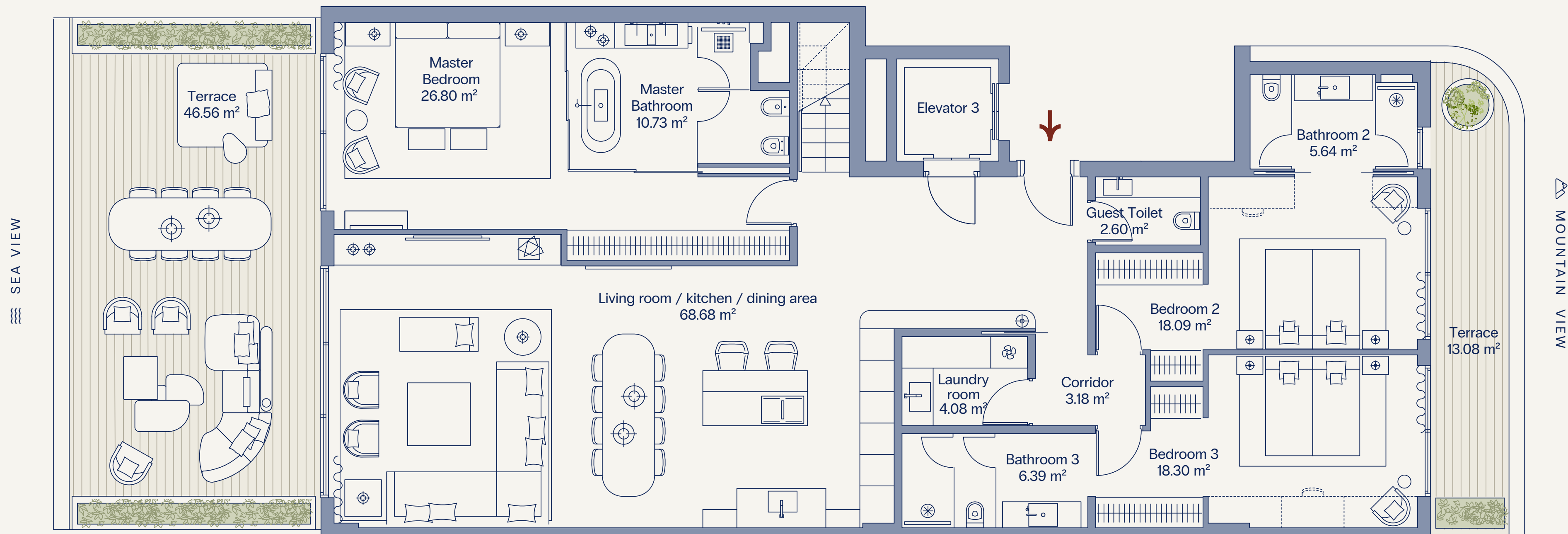
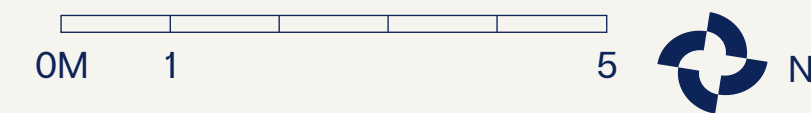
ROOFTOP FLOOR

4TH FLOOR · MAIN FLOOR





PENTHOUSE · 12 · MAIN FLOOR



USABLE AREA

167,92 sq m
Indoor area

59,64 sq m
Covered terrace

Usable area: 184,71 sq m (according to Decree 218/2005)

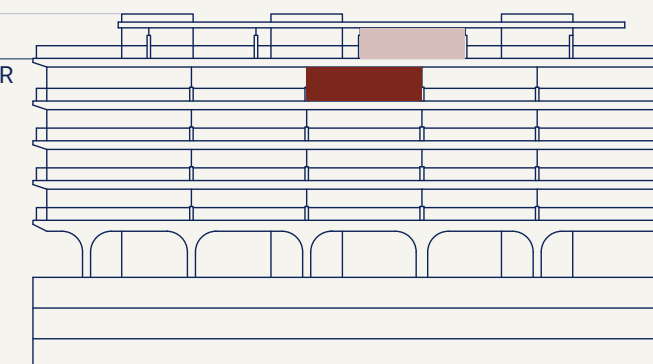
BUILT AREA

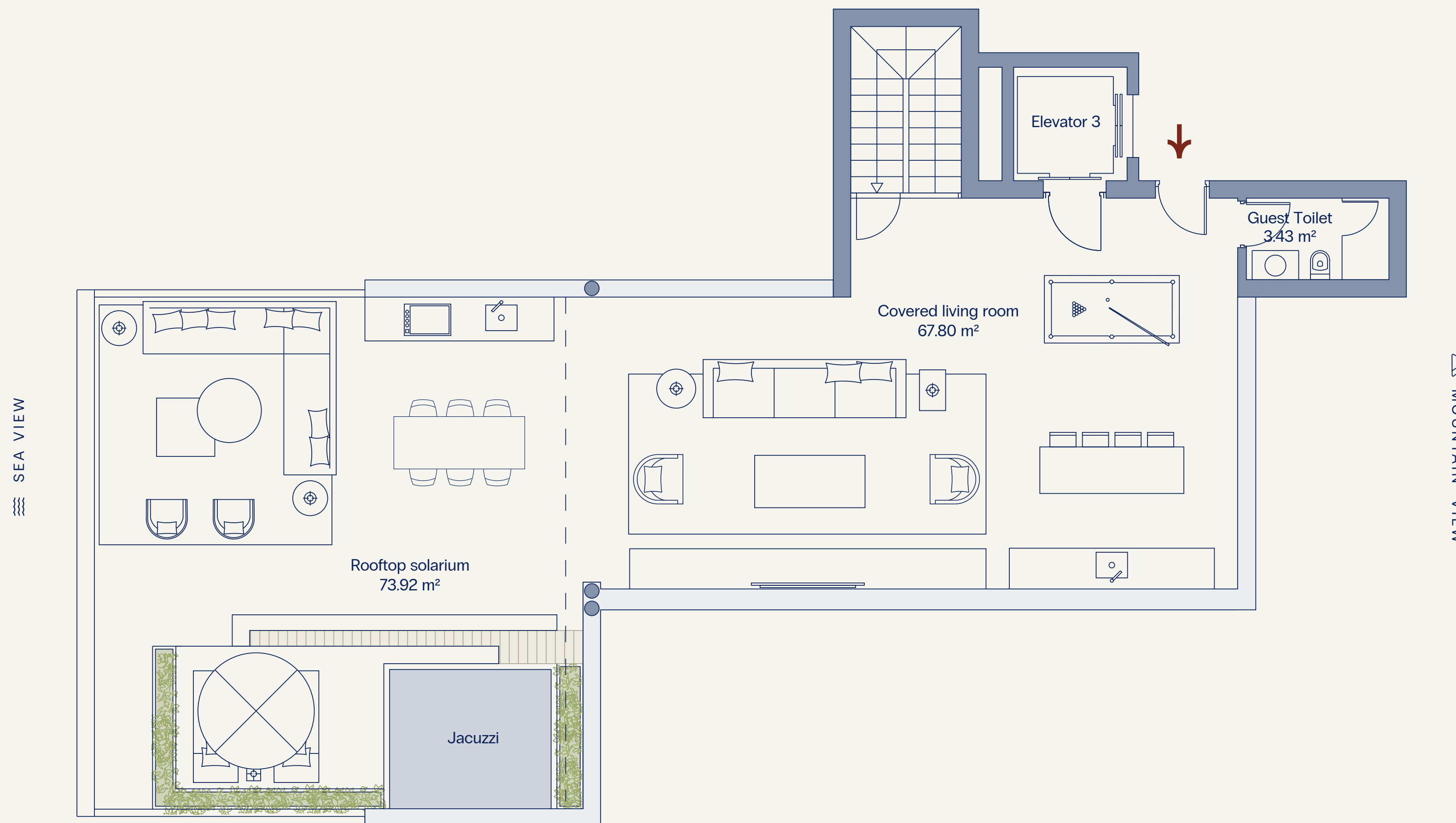
191,16 sq m
Indoor area

67,46 sq m
Covered terrace

ROOFTOP FLOOR

4TH FLOOR · MAIN FLOOR





USABLE AREA

67,80 sq m
Covered solarium

73,92 sq m
Uncovered solarium

BUILT AREA

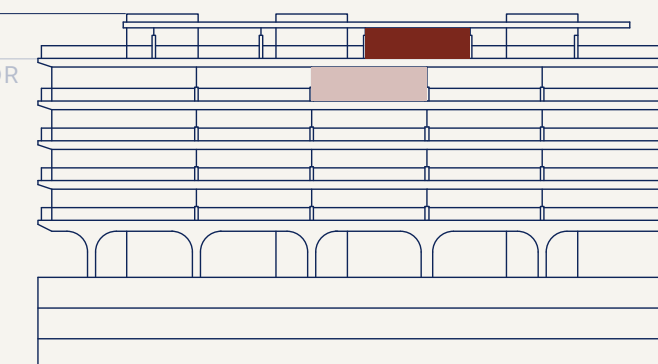
78,60 sq m
Covered solarium

79,17 sq m
Uncovered solarium

Usable area: 184,71 sq m (according to Decree 218/2005)

ROOFTOP FLOOR

4TH FLOOR · MAIN FLOOR

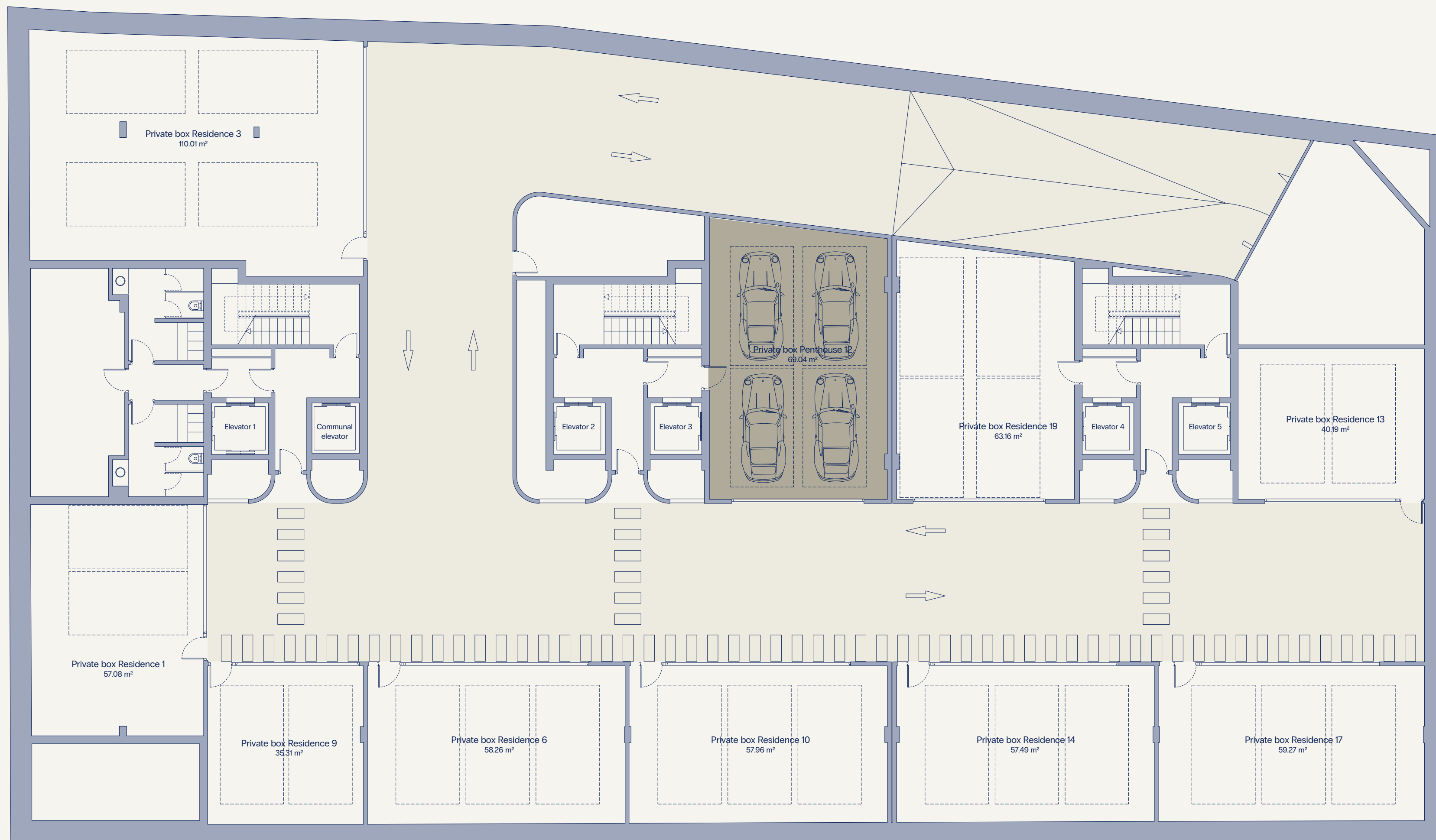
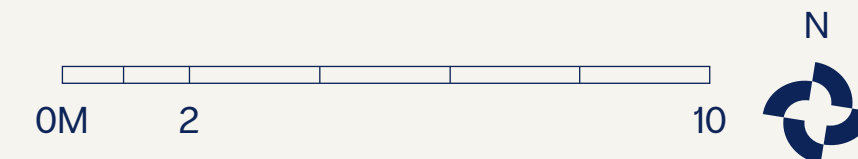




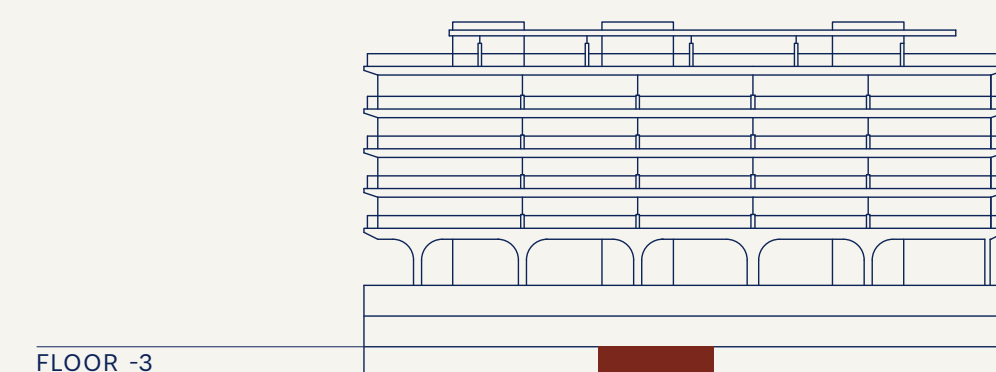
GARAGE · FLOOR - 3



MOUNTAIN VIEW



SEA VIEW



FLOOR -3

T H E T I M E L I V E D T H E T I M E L I V E D T H E T I M E L I V E D

BH
BLACK HORSE
PARTNERS

ARCHITECTURE

MAIZ & DIAZ
ARQUITECTOS

INTERIOR DESIGN

PEDRO PEÑA
INTERIOR DESIGN

LANDSCAPING

Marina Ortiz Quintas
PAISAJISTA

BRAND & RESIDENTIAL
EXPERIENCE



VERSIÓN
14 · 04 · 26

The information contained in this document is provided for informational and illustrative purposes only, has no contractual value, and does not constitute a binding offer. Images, renders, infographics, plans, surface areas, layouts, and all other representations, including computer-generated visuals, are for illustrative purposes only and may be subject to change during the course of the project for technical, construction, legal, or design reasons. Furniture, textile elements, decorative wall finishes, fireplaces, and suspended lighting fixtures shown in the project's visual materials are included solely for illustrative purposes to suggest potential decoration or layout options and are not included in the purchase price. Landscaping, planting, and botanical elements depicted are likewise indicative only and may vary depending on seasonal availability, sustainability criteria, or technical requirements. The developer reserves the right to introduce any modifications deemed necessary or appropriate for technical, construction, legal, or design reasons, as well as those arising from the granting of administrative licenses, requirements imposed by the relevant authorities, instructions from the project management team, or compliance with applicable regulations at any given time, all within the quality standards established for the development.